



Range guide

Lightweight cost effective pipework system.

POOLS & SPAS | IRRIGATION | AQUACULTURE

ABS

Pipework System

ABS Typical applications

Water treatment, Waste water, Potable water, Process water, Chilled water, Agriculture, Horticulture & Food and Beverage production

Imperial size range

1/2" to 8"

Temperature

-40°C to 60°C

Pressure rating

Up to Class E

PVC-U

Pipework System

PVC-U Typical applications

Water treatment, Waste water, Agriculture, Horticulture, Swimming pools, Irrigation, Chemical processing

Imperial size range

1/2" to 12"

Metric size range

16mm to 315mm

Temperature

0°C to 60°C

Pressure rating

Up to Class E



Valves

Available in ABS and PVC-U

Complete range of manual and ball and butterfly valves

- Ball valves
- Butterfly valves
- Check valves/Non Return valves
- Air release valve

Available in Metric and Imperial PVC-U and Imperial ABS to suit pipe ranges.



INDEX

Astore UK reserves the right to modify the details in this publication as products and specifications are updated and improved.

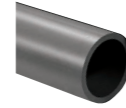
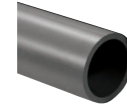
The content of this publication is for general information only and it is the user's responsibility to determine the suitability of any product for the purpose intended.

4 PVC-U & ABS IMPERIAL		11 PVC-U METRIC/IMPERIAL		18 VALVES	
4	Pipes - PVC-U	11	Pipes - PVC-U	18-21	Valves
4	Pipes - ABS	12-15	Fittings		
5-9	Fittings	16	Flanges		
10	Flanges	16	Backing Rings & Tools		
10	Backing Rings & Gaskets	17	Pipe Brackets & Tools		
		17	Accessories		

PVC-U Pipes

Imperial

WRAS Approved Pipe



PIPE PVC-U CLASS C

Size	CODE PVC-U
2"	RMRC0630
2 1/2"	RMRC0750
3"	RMRC0900
4"	RMRC1100
5"	RMRC1400
6"	RMRC1600

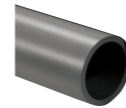
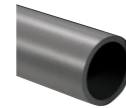
PIPE PVC-U CLASS E

Size	CODE PVC-U
1/2"	RMRE0200
3/4"	RMRE0250
1"	RMRE0320
1 1/4"	RMRE0400
1 1/2"	RMRE0500
2"	RMRE0630
2 1/2"	RMRE0750
3"	RMRE0900
4"	RMRE1100
5"	RMRE1400
6"	RMRE1600

ABS Pipes

Imperial

WRAS Approved Pipe



ABS PRESSURE PIPE CLASS C

Size	CODE ABS
1"	SPAC032A
1 1/4"	SPAC040A
1 1/2"	SPAC050A
2"	SPAC063A
2 1/2"	SPAC075A
3"	SPAC090A
4"	SPAC110A
5"	SPAC140A
6"	SPAC160A

ABS PRESSURE PIPE CLASS E

Size	CODE ABS
1/2"	SPAE020A
3/4"	SPAE025A
1"	SPAE032A
1 1/4"	SPAE040A
1 1/2"	SPAE050A
2"	SPAE063A
3"	SPAE090A
4"	SPAE110A

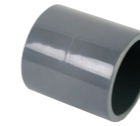
ABS PRESSURE PIPE CLASS T

Size	CODE ABS
1/2"	SPAT020A
3/4"	SPAT025A
1"	SPAT032A
1 1/4"	SPAT040A
1 1/2"	SPAT050A
2"	SPAT063A

Class T for threading.

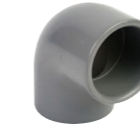
Fittings

Imperial



SOCKET PLAIN

Size	CODE PVC-U	CODE ABS
1/2"	RMA40200	SMA40200
3/4"	RMA40250	SMA40250
1"	RMA40320	SMA40320
1 1/4"	RMA40400	SMA40400
1 1/2"	RMA40500	SMA40500
2"	RMA40630	SMA40630
2 1/2"	RMA10750	SMA40750
3"	RMA40900	SMA40900
4"	RMA41100	SMA41100
5"	RMA11400	SMA41400
6"	RMA41600	SMA41600



ELBOW 90° PLAIN

Size	CODE PVC-U	CODE ABS
1/2"	RG040200	SGO40200
3/4"	RG040250	SGO40250
1"	RG040320	SGO40320
1 1/4"	RG040400	SGO40400
1 1/2"	RG040500	SGO40500
2"	RG040630	SGO40630
2 1/2"	RG010750	SGO40750
3"	RG040900	SGO40900
4"	RG041100	SGO41100
5"	RG011400	SGO41400
6"	RG041600	SGO41600



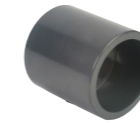
ELBOW 45° PLAIN

Size	CODE PVC-U	CODE ABS
1/2"	RGY40200	SGY40200
3/4"	RGY40250	SGY40250
1"	RGY40320	SGY40320
1 1/4"	RGY40400	SGY40400
1 1/2"	RGY40500	SGY40500
2"	RGY40630	SGY40630
2 1/2"	RGY10750	SGY40750
3"	RGY40900	SGY40900
4"	RGY41100	SGY41100
5"	RGY11400	SGY41400
6"	RGY41600	SGY41600



BEND 90° PLAIN

Size	CODE PVC-U	CODE ABS
1/2"	RCU40200	SCU40200
3/4"	RCU40250	SCU40250
1"	RCU40320	SCU40320
1 1/4"	RCU40400	SCU40400
1 1/2"	RCU40500	SCU40500
2"	RCU40630	SCU40630
2 1/2"	RCU10750	SCU40750
3"	RCU40900	SCU40900
4"	RCU41100	SCU41100



INCH/METRIC SOCKET PLAIN

Size	CODE PVC-U	CODE ABS
1/2" x 20mm	RMA50200	SMA50200
3/4" x 25mm	RMA50250	SMA50250
1" x 32mm	RMA50320	SMA50320
1 1/4" x 40mm	RMA50400	SMA50400
1 1/2" x 50mm	RMA50500	SMA50500
2" x 63mm	RMA50630	SMA50630
3" x 90mm	RMA50900	SMA50900
4" x 110mm	RMA51100	SMA51100



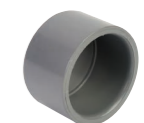
TEE 90° PLAIN

Size	CODE PVC-U	CODE ABS
1/2"	RTI40200	STI40200
3/4"	RTI40250	STI40250
1"	RTI40320	STI40320
1 1/4"	RTI40400	STI40400
1 1/2"	RTI40500	STI40500
2"	RTI40630	STI40630
2 1/2"	RTI10750	STI40750
3"	RTI40900	STI40900
4"	RTI41100	STI41100
5"	RTI11400	STI41400
6"	RTI41600	STI41600



UNION PLAIN

Size	CODE PVC-U	CODE ABS
1/2"	RBO40200	SBO40200
3/4"	RBO40250	SBO40250
1"	RBO40320	SBO40320
1 1/4"	RBO40400	SBO40400
1 1/2"	RBO40500	SBO40500
2"	RBO40630	SBO40630
2 1/2"	RBO10750	SBO40750
3"	RBO40900	SBO40900
4"	RBO41100	SBO41100



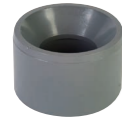
END CAP PLAIN

Size	CODE PVC-U	CODE ABS
1/2"	RCA40200	SCA40200
3/4"	RCA40250	SCA40250
1"	RCA40320	SCA40320
1 1/4"	RCA40400	SCA40400
1 1/2"	RCA40500	SCA40500
2"	RCA40630	SCA40630
2 1/2"	RCA10750	SCA40750
3"	RCA40900	SCA40900
4"	RCA41100	SCA41100
5"	RCA11400	-
6"	RCA41600	-

All imperial PVC-U & ABS Pipes are available in 6 metre lengths

Fittings

Imperial



REDUCING BUSH PLAIN

Size	CODE PVC-U	CODE ABS
3/4" x 1/2"	RRC4025B	SRC4025B
1" x 1/2"	RRC4032B	SRC4032B
1" x 3/4"	RRC4032C	SRC4032C
1 1/4" x 1"	RRC4040D	SRC4040D
1 1/2" x 3/4"	RRC4050C	SRC4050C
1 1/2" x 1"	RRC4050D	SRC4050D
1 1/2" x 1 1/4"	RRC4050E	SRC4050E
2" x 1"	RRC4063D	SRC4063D
2" x 1 1/4"	RRC4063E	SRC4063E
2" x 1 1/2"	RRC4063F	SRC4063F
2 1/2" x 2"	RRC4075G	SRC4075G
3" x 1 1/2"	RRC4090F	SRC4090F
3" x 2"	RRC4090G	SRC4090G
3" x 2 1/2"	RRC4090H	SRC4090H
4" x 2"	RRC4110G	SRC4110G
4" x 3"	RRC4110I	SRC4110I
5" x 4"	RRC4140L	SRC4140L
6" x 4"	RRC4160L	SRC4160L

BEND LONG RADIUS 90 DEGREE

Size	CODE PVC-U	CODE ABS
3"	RLU40900	SLU40900
4"	RLU41100	SLU41100
6"	RLU41600	SLU41600

N.B. Accessory discount applies to this item

LONG RADIUS 45 DEGREE

Size	CODE PVC-U	CODE ABS
1 1/2"	-	SLY40500
2"	RLY40630	SLY40630
3"	RLY40900	SLY40900
4"	RLY41100	SLY41100

N.B. Accessory discount applies to this item

BEND LONG RADIUS 22 1/2 DEGREE

Size	CODE PVC-U	CODE ABS
1 1/2"	RLT40500	SLT40500
2"	RLT40630	SLT40630
3"	RLT40900	SLT40900
4"	RLT41100	SLT41100
6"	RLT41600	SLT41600

N.B. Accessory discount applies to this item

ADAPTOR MALE PLAIN/FEMALE THREADED

Size	CODE PVC-U	CODE ABS
1/2"	RAF60200	SAF60200
3/4"	RAF60250	SAF60250
1"	RAF60320	SAF60320
1 1/4"	RAF60400	SAF60400
1 1/2"	RAF60500	SAF60500
2"	RAF60630	SAF60630

ADAPTOR FEMALE PLAIN/MALE THREADED

Size	CODE PVC-U	CODE ABS
1/2"	RAM60200	SAM60200
3/4"	RAM60250	SAM60250
1"	RAM60320	SAM60320
1 1/4"	RAM60400	SAM60400
1 1/2"	RAM60500	SAM60500
2"	RAM60630	SAM60630
2 1/2"	RAM30750H	-
3"	RAM60900	-

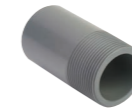
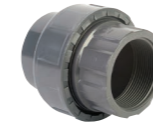
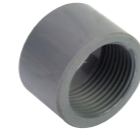
TANK CONNECTOR PLAIN/THREADED

Size	CODE PVC-U	CODE ABS
1/2"	RTC60200	STC60200
3/4"	RTC60250	STC60250
1"	RTC60320	STC60320
1 1/4"	RTC60400	STC60400
1 1/2"	RTC60500	STC60500
2"	RTC60630	STC60630
2 1/2"	RTC60750	STC60750
3"	RTC60900	STC60900
4"	RTC61100	STC61100

COMPOSITE UNION MALE BSP BRASS

Size	CODE PVC-U	CODE ABS
1/2"	RMB60200	SMB60200
3/4"	RMB60250	SMB60250
1"	RMB60320	SMB60320
1 1/4"	RMB60400	SMB60400
1 1/2"	RMB60500	SMB60500
2"	RMB60630	SMB60630

N.B. Accessory discount applies to this item



ELBOW 90° PLAIN/THREADED

Size	CODE PVC-U	CODE ABS
1/2"	RGO60200	SGO60200
3/4"	RGO60250	SGO60250
1"	RGO60320	SGO60320
1 1/4"	RGO60400	SGO60400
1 1/2"	RGO60500	SGO60500
2"	RGO60630	SGO60630
2 1/2"	RG03075H	-
3"	RGO60900	-

TEE PLAIN/THREADED BRANCH

Size	CODE PVC-U
1/2"	RTI60200
3/4"	RTI60250
1"	RTI60320
1 1/4"	RTI60400
1 1/2"	RTI60500
2"	RTI60630

REDUCING BUSH PLAIN/THREADED

Size	CODE PVC-U	CODE ABS
1/2" x 3/8"	RRC6020A	SRC6020A
3/4" x 1/2"	RRC6025B	SRC6025B
1" x 3/4"	RRC6032C	SRC6032C

UNION PLAIN/THREADED

Size	CODE PVC-U
1/2"	RBO60200
3/4"	RBO60250
1"	RBO60320
1 1/4"	RBO60400
1 1/2"	RBO60500
2"	RBO60630

BARREL NIPPLE PLAIN/THREADED

Size	CODE PVC-U	CODE ABS
3/8"	RBN60160	-
1/2"	RBN60200	SBN60200
3/4"	RBN60250	SBN60250
1"	RBN60320	SBN60320
1 1/4"	RBN60400	SBN60400
1 1/2"	RBN60500	SBN60500
2"	RBN60630	SBN60630
2 1/2"	RBN60750	SBN60750
3"	RBN60900	SBN60900
4"	RBN61100	SBN61100

COMPOSITE UNION FEMALE BSP BRASS

Size	CODE PVC-U	CODE ABS
1/2"	RFB60200	SFB60200
3/4"	RFB60250	SFB60250
1"	RFB60320	SFB60320
1 1/4"	RFB60400	SFB60400
1 1/2"	RFB60500	SFB60500
2"	RFB60630	SFB60630

N.B. Accessory discount applies to this item

HOSE ADAPTOR BSP THREADED/METRIC

Size	CODE PVC-U
3/8"	RPO3016A
1/2"	RPO3020B
3/4"	RPO3025C
1"	RPO3032D
1 1/4"	RPO3040E
1 1/2"	RPO3050F
2"	RPO3063G

SOCKET PLAIN/THREADED

Size	CODE PVC-U	CODE ABS
1/2"	RMA60200	SMA60200
3/4"	RMA60250	SMA60250
1"	RMA60320	SMA60320
1 1/4"	RMA60400	SMA60400
1 1/2"	RMA60500	SMA60500
2"	RMA60630	SMA60630
2 1/2"	RMA30750H	-
3"	RMA60900	-
4"	RMA61100	-

Fittings

Imperial



SOCKET THREADED

Size	CODE PVC-U
3/8"	RMA20160
1/2"	RMA20200
3/4"	RMA20250
1"	RMA20320
1 1/4"	RMA20400
1 1/2"	RMA20500
2"	RMA20630
2 1/2"	RMA20750
3"	RMA20900
4"	RMA21100



ELBOW 90° THREADED

Size	CODE PVC-U
3/8"	RGO20160
1/2"	RGO20200
3/4"	RGO20250
1"	RGO20320
1 1/4"	RGO20400
1 1/2"	RGO20500
2"	RGO20630
2 1/2"	RGO20750
3"	RGO20900
4"	RGO21100



TEE THREADED

Size	CODE PVC-U
3/8"	RTI20160
1/2"	RTI20200
3/4"	RTI20250
1"	RTI20320
1 1/4"	RTI20400
1 1/2"	RTI20500
2"	RTI20630
2 1/2"	RTI20750
3"	RTI20900
4"	RTI21100

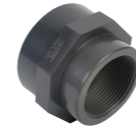


PLUG THREADED

Size	CODE PVC-U
3/8"	RTA20160
1/2"	RTA20200
3/4"	RTA20250
1"	RTA20320
1 1/4"	RTA20400
1 1/2"	RTA20500
2"	RTA20630
2 1/2"	RTA20750
3"	RTA20900
4"	RTA21100

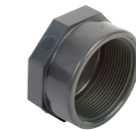
Fittings

Imperial



REDUCING PIECE FEMALE THREADED

Size	CODE PVC-U
1/2" x 3/8"	RMR2020A
3/4" x 1/2"	RMR2025B
1" x 3/4"	RMR2032C
1 1/4" x 1"	RMR2040D
1 1/2" x 1 1/4"	RMR2050E
2" x 1 1/2"	RMR2063F
2 1/2" x 2"	RMR2075G
3" x 2 1/2"	RMR2090H
4" x 3"	RMR2110I



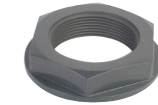
END CAP THREADED

Size	CODE PVC-U
1/2"	RCA20200
3/4"	RCA20250
1"	RCA20320
1 1/4"	RCA20400
1 1/2"	RCA20500
2"	RCA20630
2 1/2"	RCA20750
3"	RCA20900
4"	RCA21100



UNION THREADED

Size	CODE PVC-U
1/2"	RBO20200
3/4"	RBO20250
1"	RBO20320
1 1/4"	RBO20400
1 1/2"	RBO20500
2"	RBO20630
2 1/2"	RBO20750
3"	RBO20900
4"	RBO21100



BACK NUT THREADED

Size	CODE PVC-U	CODE ABS
1/2"	RNU20200	SNU20200
3/4"	RNU20250	SNU20250
1"	RNU20320	SNU20320
1 1/4"	RNU20400	SNU20400
1 1/2"	RNU20500	SNU20500
2"	RNU20630	SNU20630
2 1/2"	RNU20750	SNU2075N
3"	RNU2090N	SNU2090N
4"	RNU2110N	SNU2110N



HEXAGON NIPPLE THREADED

Size	CODE PVC-U
3/8"	RNI20160
1/2"	RNI20200
3/4"	RNI20250
1"	RNI20320
1 1/4"	RNI20400
1 1/2"	RNI20500
2"	RNI20630
2 1/2"	RNI20750
3"	RNI20900
4"	RNI21100



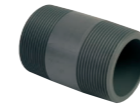
REDUCING NIPPLE THREADED

Size	CODE PVC-U
1/2" x 3/8"	RNR2020A
3/4" x 1/2"	RNR2025B
1" x 3/4"	RNR2032C
1 1/4" x 1"	RNR2040D
1 1/2" x 1 1/4"	RNR2050E
2" x 1 1/2"	RNR2063F
2 1/2" x 2"	RNR2075G
3" x 2 1/2"	RNR2090H
4" x 3"	RNR2110I



REDUCING PIECE FEMALE THREADED/MALE THREADED

Size	CODE PVC-U
1/2" x 3/8"	RMG2016B
3/4" x 1/2"	RMG2020C
1" x 3/4"	RMG2025D
1 1/4" x 1"	RMG2032E
1 1/2" x 1 1/4"	RMG2040F
2" x 1 1/2"	RMG2050G
2 1/2" x 2"	RMG2063H
3" x 2 1/2"	RMG2075I
4" x 3"	RMG2090L



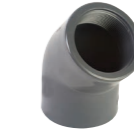
BARREL NIPPLE THREADED /THREADED

Size	CODE PVC-U	CODE ABS
3/8"	RBA20160	-
1/2"	RBA20200	SBA20200
3/4"	RBA20250	SBA20250
1"	RBA20320	SBA20320
1 1/4"	RBA20400	SBA20400
1 1/2"	RBA20500	SBA20500
2"	RBA20630	SBA20630
2 1/2"	RBA20750	SBA20750
3"	RBA20900	SBA20900
4"	RBA21100	SBA21100



REDUCING PIECE MALE THREADED/FEMALE THREADED

Size	CODE PVC-U
1/2" x 3/8"	RRI2020A
3/4" x 1/2"	RRI2025B
1" x 1/2"	RRI2032B
1" x 3/4"	RRI2032C
1 1/4" x 1/2"	RRI2040B
1 1/4" x 3/4"	RRI2040C
1 1/4" x 1"	RRI2040D
1 1/2" x 3/4"	RRI2050C
1 1/2" x 1"	RRI2050D
1 1/2" x 1 1/4"	RRI2050E
2" x 1"	RRI2063D
2" x 1 1/4"	RRI2063E
2" x 1 1/2"	RRI2063F
2 1/2" x 1 1/4"	RRI2075E
2 1/2" x 1 1/2"	RRI2075F
2 1/2" x 2"	RRI2075G
3" x 1 1/2"	RRI2090F
3" x 2"	RRI2090G
3" x 2 1/2"	RRI2090H
4" x 2"	RRI2110G
4" x 2 1/2"	RRI2110H
4" x 3"	RRI2110I



ELBOW 45° THREADED

Size	CODE PVC-U
1/2"	RGY20200
3/4"	RGY20250
1"	RGY20320
1 1/4"	RGY20400
1 1/2"	RGY20500
2"	RGY20630
2 1/2"	RGY20750
3"	RGY20900
4"	RGY21100

Flanges

Imperial



FULL FACE FLANGE PN16

Size	CODE PVC-U	CODE ABS
1/2"	RFFN0200	SFFN0200
3/4"	RFFN0250	SFFN0250
1"	RFFN0320	SFFN0320
1 1/4"	RFFN0400	SFFN0400
1 1/2"	RFFN0500	SFFN0500
2"	RFFN0630	SFFN0630
2 1/2"	RFFN0750	SFFN0750
3"	RFFN0900	SFFN0900
4"	RFFN1100	SFFN1100



STUB FLANGE SERRATED FACE

Size	CODE PVC-U	CODE ABS
1/2"	RQR40200	-
3/4"	RQR40250	-
1"	RQR40320	-
1 1/4"	RQR40400	-
1 1/2"	RQR40500	-
2"	RQR40630	SQR40630
2 1/2"	RQR10750	SQR40750
3"	RQR40900	SQR40900
4"	RQR41100	SQR41100
5"	RQR11400	SQR41400
6"	RQR41600	SQR41600



BLANK FLANGE DRILLED PN16

Size	CODE PVC-U	CODE ABS	
1/2"	RFCN0200	-	MTO
3/4"	RFCN0250	-	MTO
1"	RFCN0320	-	MTO
1 1/2"	RFCN0500	-	MTO
2"	RFCN0630	SFCN0630	MTO
3"	RFCN0900	SFCN0900	MTO
4"	RFCN1100	SFCN1100	MTO
6"	RFCN1600	SFCN1600	MTO

N.B. Accessory discount applies to this item

Backing Rings & Gaskets



GASKET-FULL FACE DRILLED PN16

Size	CODE
1/2"	EGFN0200
3/4"	EGFN0250
1"	EGFN0320
1 1/4"	EGFN0400
1 1/2"	EGFN0500
2"	EGFN0630
2 1/2"	EGFN0750
3"	EGFN0900
4"	EGFN1100
4"	EGFN110E
6"	EGFN1600

N.B. Accessory discount applies to this item



BACKING RING - GALVANISED MILD STEEL DRILLED PN16

Size	CODE
1/2"	GBR4020N
3/4"	GBR4025N
1"	GBR4032N
1 1/4"	GBR4040N
1 1/2"	GBR4050N
2"	GBR4063N
2 1/2"	GBR4075N
3"	GBR4090N
4"	GBR4110N
5"	GBR4140N
6"	GBR4160N

N.B. Accessory discount applies to this item



GASKET-STUB FLANGE FOR QR4 STUBS

Size	CODE
1/2"	EGQP0200
3/4"	EGQP0250
1"	EGQP0320
1 1/4"	EGQP0400
1 1/2"	EGQP0500
2"	EGQP0630
2 1/2"	EGQP0750
3"	EGQP0900
4"	EGQP1100
5"	EGQP1400
6"	EGQP1600

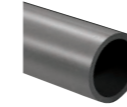
N.B. Accessory discount applies to this item

These items are suitable with both ABS & PVC-U systems.

PVC-U Pipes

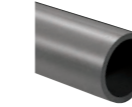
Metric

WRAS Approved Pipe



PIPE PVC-U PN10 PLAIN END

Size	CODE PVC-U	
32	RM100320	
40	RM100400	
50	RM100500	
63	RM100630	
75	RM100750	
90	RM100900	
110	RM101100	
125	RM101250	MTO
140	RM101400	MTO
160	RM101600	MTO
200	RM102000	MTO
225	RM102250	MTO
250	RM102500	MTO
280	RM102800	MTO
315	RM103150	MTO



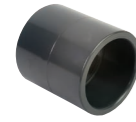
PIPE PVC-U PN10 PLAIN END

Size	CODE PVC-U	
20	RM160200	
25	RM160250	
32	RM160320	
40	RM160400	
50	RM160500	
63	RM160630	
75	RM160750	
90	RM160900	
110	RM161100	
125	RM161250	MTO
140	RM161400	MTO
160	RM161600	MTO
200	RM162000	MTO
225	RM162250	MTO
250	RM162500	MTO
280	RM162800	MTO
315	RM163150	MTO

All metric PVC-U pipes are available in 5 metre lengths.

Fittings

Metric



SOCKET PLAIN*

Size	CODE PVC-U
16	RMA10160
20	RMA10200
25	RMA10250
32	RMA10320
40	RMA10400
50	RMA10500
63	RMA10630
75	RMA10750
90	RMA10900
110	RMA11100
125	RMA11250
140	RMA11400
160	RMA11600
200	RMA12000
225	RMA12250
250	RMA12500
280	RMA12800
315	RMA13150



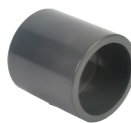
UNION PLAIN

Size	CODE PVC-U
16	RBO10160
20	RBO10200
25	RBO10250
32	RBO10320
40	RBO10400
50	RBO10500
63	RBO10630
75	RBO10750
90	RBO10900
110	RBO11100



ELBOW 90° PLAIN*

Size	CODE PVC-U
16	RG010160
20	RG010200
25	RG010250
32	RG010320
40	RG010400
50	RG010500
63	RG010630
75	RG010750
90	RG010900
110	RG011100
125	RG011250
140	RG011400
160	RG011600
200	RG012000
225	RG012250
250	RG012500
280	RG012800
315	RG013150



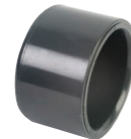
METRIC/INCH SOCKET PLAIN

Size	CODE PVC-U
1/2" x 20mm	RMA50200
3/4" x 25mm	RMA50250
1" x 32mm	RMA50320
1 1/4" x 40mm	RMA50400
1 1/2" x 50mm	RMA50500
2" x 63mm	RMA50630
3" x 90mm	RMA50900
4" x 110mm	RMA51100



ELBOW 45° PLAIN*

Size	CODE PVC-U
16	RGY10160
20	RGY10200
25	RGY10250
32	RGY10320
40	RGY10400
50	RGY10500
63	RGY10630
75	RGY10750
90	RGY10900
110	RGY11100
125	RGY11250
140	RGY11400
160	RGY11600
200	RGY12000
225	RGY12250
250	RGY12500
280	RGY12800
315	RGY13150



END CAP PLAIN*

Size	CODE PVC-U
16	RCA10160
20	RCA10200
25	RCA10250
32	RCA10320
40	RCA10400
50	RCA10500
63	RCA10630
75	RCA10750
90	RCA10900
110	RCA11100
125	RCA11250
140	RCA11400
160	RCA11600



TEE 90° PLAIN*

Size	CODE PVC-U
16	RTI10160
20	RTI10200
25	RTI10250
32	RTI10320
40	RTI10400
50	RTI10500
63	RTI10630
75	RTI10750
90	RTI10900
110	RTI11100
125	RTI11250
140	RTI11400
160	RTI11600
200	RTI12000
225	RTI12250
250	RTI12500
280	RTI12800
315	RTI13150



TEE 45° PLAIN*

Size	CODE PVC-U
32	RTY10320
40	RTY10400
50	RTY10500
63	RTY10630

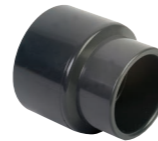
Fittings

Metric



BEND 90° PLAIN*

Size	CODE PVC-U
20	RCU10200
25	RCU10250
32	RCU10320
40	RCU10400
50	RCU10500
63	RCU10630
75	RCU10750
90	RCU10900
110	RCU11100



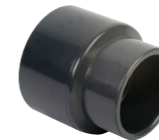
REDUCING PIECE MALE PLAIN /FEMALE PLAIN

Size	CODE PVC-U
160 x 110	RRL160L



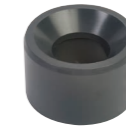
CROSS PLAIN*

Size	CODE PVC-U
25	RCR10250
32	RCR10320
40	RCR10400
50	RCR10500
63	RCR10630



REDUCING SOCKET PLAIN*

Size	CODE PVC-U
20 x 16	RMRT020A
25 x 20	RMRT025B
32 x 25	RMRT032C
40 x 32	RMRT040D
50 x 40	RMRT050E
63 x 50	RMRT063F
75 x 63	RMRT075G
90 x 75	RMRT090H
110 x 90	RMRT110I
125 x 110	RMRT125L
140 x 110	RMRT140L



REDUCING BUSH PLAIN*

Size	CODE PVC-U
20 x 16	RRC1020A
25 x 16	RRC1025A
25 x 20	RRC1025B
32 x 16	RRC1032A
32 x 20	RRC1032B
32 x 25	RRC1032C
40 x 20	RRC1040B
40 x 25	RRC1040C
40 x 32	RRC1040D
50 x 25	RRC1050C
50 x 32	RRC1050D
50 x 40	RRC1050E
63 x 32	RRC1063D
63 x 40	RRC1063E
63 x 50	RRC1063F
75 x 40	RRC1075E
75 x 50	RRC1075F
75 x 63	RRC1075G
90 x 50	RRC1090F
90 x 63	RRC1090G
90 x 75	RRC1090H
110 x 63	RRC1110G
110 x 75	RRC1110H
110 x 90	RRC1110I
125 x 75	RRC1125H
125 x 90	RRC1125I
125 x 110	RRC1125L
140 x 90	RRC1140I
140 x 110	RRC1140L
140 x 125	RRC1140M
160 x 110	RRC1160L
160 x 125	RRC1160M
160 x 140	RRC1160N
200 x 160	RRC1200O
225 x 160	RRC1225O
225 x 200	RRC1225P
250 x 160	RRC1250O
250 x 200	RRC1250P
250 x 225	RRC1250Q
280 x 225	RRC1280Q
315 x 200	RRC1315P
315 x 225	RRC1315Q
315 x 250	RRC1315R
315 x 280	RRC1315S

Fittings

Metric/Imperial



SOCKET PLAIN/BSP THREADED

Size	CODE PVC-U
16 x 3/8"	RMA3016A
20 x 1/2"	RMA3020B
25 x 3/4"	RMA3025C
32 x 1"	RMA3032D
40 x 1 1/4"	RMA3040E
50 x 1 1/2"	RMA3050F
63 x 2"	RMA3063G
75 x 2 1/2"	RMA3075H
90 x 3"	RMA3090I
110 x 4"	RMA3110L



UNION PLAIN/BSP THREADED

Size	CODE PVC-U
16 x 3/8"	RBO3016A
20 x 1/2"	RBO3020B
25 x 3/4"	RBO3025C
32 x 1"	RBO3032D
40 x 1 1/4"	RBO3040E
50 x 1 1/2"	RBO3050F
63 x 2"	RBO3063G
75 x 2 1/2"	RBO3075H
90 x 3"	RBO3090I
110 x 4"	RBO3110L



ELBOW 90° PLAIN/BSP THREADED

Size	CODE PVC-U
16 x 3/8"	RGO3016A
20 x 1/2"	RGO3020B
25 x 3/4"	RGO3025C
32 x 1"	RGO3032D
40 x 1 1/4"	RGO3040E
50 x 1 1/2"	RGO3050F
63 x 2"	RGO3063G
75 x 2 1/2"	RGO3075H
90 x 3"	RGO3090I
110 x 4"	RGO3110L



ADAPTOR PLAIN SPIGOT/BSP THREADED FEMALE

Size	CODE PVC-U
20 x 1/2"	RAF3020B
20 x 3/4"	RAF3025C
25 x 1/2"	RAF3025B
25 x 3/4"	RAF3025C
25 x 1"	RAF3025D
32 x 3/4"	RAF3032C
32 x 1"	RAF3032D
40 x 1"	RAF3040D
40 x 1 1/4"	RAF3040E
50 x 1 1/2"	RAF3050F
50 x 2"	RAF3050G
63 x 2"	RAF3063G
75 x 2"	RAF3075G
75 x 2 1/2"	RAF3075H
75 x 3"	RAF3075I
90 x 2 1/2"	RAF3090H
90 x 3"	RAF3090I
90 x 4"	RAF3090L
110 x 3"	RAF3110I
110 x 4"	RAF3110L



TEE 90° PLAIN/BSP THREADED BRANCH

Size	CODE PVC-U
16 x 16 x 3/8"	RTI3016A
20 x 20 x 1/2"	RTI3020B
25 x 25 x 3/4"	RTI3025C
32 x 32 x 1"	RTI3032D
40 x 40 x 1 1/4"	RTI3040E
50 x 50 x 1 1/2"	RTI3050F
63 x 63 x 2"	RTI3063G
75 x 75 x 2 1/2"	RTI3075H
90 x 90 x 3"	RTI3090I
110 x 110 x 4"	RTI3110L



METRIC PVC TANK CONNECTOR

Size	CODE PVC-U
3/4" x 16 x 1/2"	RAS3016B
1" x 20 x 3/4"	RAS3020C
1 1/4" x 25 x 1"	RAS3025D
1 1/2" x 32 x 1"	RAS3032D
2" x 40 x 1 1/2"	RAS3040F



ADAPTOR PLAIN FEMALE/BSP THREADED MALE SPIGOT

Size	CODE PVC-U
12 x 16 x 3/8"	RAM3012A
16 x 20 x 3/8"	RAM3016A
16 x 20 x 1/2"	RAM3016B
20 x 25 x 3/8"	RAM3020A
20 x 25 x 1/2"	RAM3020B
20 x 25 x 3/4"	RAM3020C
25 x 32 x 1/2"	RAM3025B
25 x 32 x 3/4"	RAM3025C
25 x 32 x 1"	RAM3025D
32 x 40 x 3/4"	RAM3032C
32 x 40 x 1"	RAM3032D
32 x 40 x 1 1/4"	RAM3032E
40 x 50 x 1"	RAM3040D
40 x 50 x 1 1/4"	RAM3040E
40 x 50 x 1 1/2"	RAM3040F
50 x 63 x 1 1/4"	RAM3050E
50 x 63 x 1 1/2"	RAM3050F
50 x 63 x 2"	RAM3050G
63 x 75 x 1 1/2"	RAM3063F
63 x 75 x 2"	RAM3063G
63 x 75 x 2 1/2"	RAM3063H
75 x 90 x 2"	RAM3075G
75 x 90 x 2 1/2"	RAM3075H
75 x 90 x 3"	RAM3075I
90 x 110 x 2 1/2"	RAM3090H
90 x 110 x 3"	RAM3090I
90 x 110 x 4"	RAM3090L
110 x 125 x 3"	RAM3110I
110 x 125 x 4"	RAM3110L

Fittings

Metric/Imperial



ADAPTOR PLAIN/BSP THREADED WITH METAL REINFORCING RING

Size	CODE PVC-U
20 x 1/2"	RRM3020B
25 x 1/2"	RRM3025B
25 x 3/4"	RRM3025C
32 x 3/4"	RRM3032C
32 x 1"	RRM3032D
40 x 1"	RRM3040D
40 x 1 1/4"	RRM3040E
50 x 1 1/2"	RRM3050F
50 x 2"	RRM3050G
63 x 2"	RRM3063G



HOSE ADAPTOR BSP THREADED/METRIC

Size	CODE PVC-U
3/8" x 16	RPO3016A
1/2" x 20	RPO3020B
3/4" x 25	RPO3025C
1" x 32	RPO3032D
1 1/4" x 40	RPO3040E
1 1/2" x 50	RPO3050F
2" x 63	RPO3063G



ADAPTOR PLAIN/BSP THREADED WITH METAL REINFORCING RING

Size	CODE PVC-U
16 x 3/8"	RMM3016A
20 x 1/2"	RMM3020B
25 x 3/4"	RMM3025C
32 x 1"	RMM3032D
40 x 1 1/4"	RMM3040E
50 x 1 1/2"	RMM3050F
63 x 2"	RMM3063G



UNION PLAIN/MALE BSP

Size	CODE PVC-U
50 x 1 1/2"	RBM3050F
50 x 2"	RBM3050G
63 x 2"	RBM3063G



ADAPTOR PLAIN/BSP THREADED WITH METAL REINFORCING RING

Size	CODE PVC-U
16 x 3/8"	RGM3016A
20 x 1/2"	RGM3020B
25 x 3/4"	RGM3025C
32 x 1"	RGM3032D
40 x 1 1/4"	RGM3040E
50 x 1 1/2"	RGM3050F
63 x 2"	RGM3063G



COMPOSITE UNION PVC MALE BSP BRASS

Size	CODE PVC-U
20 x 1/2"	RMB3020B
25 x 3/4"	RMB3025C
32 x 1"	RMB3032D
40 x 1 1/4"	RMB3040E
50 x 1 1/2"	RMB3050F
63 x 2"	RMB3063G

N.B. Accessory discount applies to this item



ADAPTOR PLAIN/BSP THREADED WITH METAL REINFORCING RING

Size	CODE PVC-U
16 x 3/8"	RTM3016A
20 x 1/2"	RTM3020B
25 x 3/4"	RTM3025C
32 x 1"	RTM3032D
40 x 1 1/4"	RTM3040E
50 x 1 1/2"	RTM3050F
63 x 2"	RTM3063G



COMPOSITE UNION PVC FEMALE BSP BRASS

Size	CODE PVC-U
20 x 1/2"	RFB3020B
25 x 3/4"	RFB3025C
32 x 1"	RFB3032D
40 x 1 1/4"	RFB3040E
50 x 1 1/2"	RFB3050F
63 x 2"	RFB3063G

N.B. Accessory discount applies to this item

For threaded fittings see Imperial Section on pages 8 & 9.

**Page numbers to be adjusted in installer guide

Flanges

Metric



BLANK FLANGE DRILLED BS 4504 PN16

Size	CODE
20	RFC10200
25	RFC10250
32	RFC10320
40	RFC10400
50	RFC10500
63	RFC10630
75	RFC10750
90	RFC10900
110	RFC11100
160	RFC11600



FULL FACE FLANGE PLAIN/
DRILLED BS 4504 PN10/16

Size	CODE
20	RFF10200
25	RFF10250
32	RFF10320
40	RFF10400
50	RFF10500
63	RFF10630
75	RFF10750
90	RFF10900
110	RFF11100



STUB FLANGE SERRATED FACE*

Size	CODE
20	RQR10200
25	RQR10250
32	RQR10320
40	RQR10400
50	RQR10500
63	RQR10630
75	RQR10750
90	RQR10900
110	RQR11100
125	RQR11250
140	RQR11400
160	RQR11600
200	RQR12000
225	RQR12250
250	RQR12500
280	RQR12800
315	RQR13150



LOOSE FLANGE DRILLED BS 4504 PN16

Size	CODE
20	RFL10200
25	RFL10250
32	RFL10320
40	RFL10400
50	RFL10500
63	RFL10630
75	RFL10750
90	RFL10900
110	RFL11100
125	RFL11250
140	RFL11400
160	RFL11600
200*	RFL12000
225*	RFL1225N
250*	RFL12500
280*	RFL12800
315*	RFL13150

*NP10 drilling

Backing Rings & Gaskets



GASKET FULL FACE DRILLED PN16

Size	CODE
20	EGFN0200
25	EGFN0250
32	EGFN0320
40	EGFN0400
50	EGFN0500
63	EGFN0630
75	EGFN0750
90	EGFN0900
110	EGFN1100

N.B. Accessory discount applies to this item



GASKET STUB FLANGE FOR QR1 STUBS

Size	CODE
20	EGQP0200
25	EGQP0250
32	EGQP0320
40	EGQP0400
50	EGQP0500
63	EGQP0630
75	EGQP0750
90	EGQP0900
110	EGQP1100
125	EGQP1250
140	EGQP1400
160	EGQP1600
200	EGQP2000
225	EGQP2250
250	EGQP2500

N.B. Accessory discount applies to this item



BACKING RING GALVANISED MILD STEEL
DRILLED PN16

Size	CODE
20	GBR10200
25	GBR10250
32	GBR10320
40	GBR10400
50	GBR10500
63	GBR10630
75	GBR10750
90	GBR10900
110	GBR11100
160	GBR11600

N.B. Accessory discount applies to this item

These are suitable with both ABS & PVC-U systems.

Pipe Brackets & Tools



PIPE BRACKET

Size	CODE
3/8"	PST40160
1/2"	PST40200
3/4"	PST40250
1"	PST40320



PIPE BRACKET

Size	CODE
16	PST10160
20	PST10200
25	PST10250
32	PST10320



PIPE CUTTER

Size	CODE
16-63mm	TTF00100
50-125mm	TTF00101
16-63mm spare cutter wheel	TTF00102
50-125mm spare cutter wheel	TTF00103



PIPE BRACKET WITH STRAP

Size	CODE
1 1/4"	PST40400
1 1/2"	PST40500
2"	PST40630
2 1/2"	PST10750
3"	PST40900
4"	PST41100



PIPE BRACKET WITH STRAP

Size	CODE
40	PST10400
50	PST10500
63	PST10630
75	PST10750
90	PST10900
110	PST11100



CHAMFERING TOOLS

Size	CODE
16-63mm chamfering tool	CAF00100
32-160mm chamfering tool	CAF00102

Accessories - PVC-U & ABS



PVC-U SOLVENT CEMENT

Size	CODE
1/2 litre	RPCO0200

N.B. Accessory discount applies to this item



ASTORE ECO CLEANER
(ABS/PVC-U)

Size	CODE
1/2 litre	MCFO0200

N.B. Accessory discount applies to this item



SILICONE REPAIR TAPE

Size	CODE
Silicone repair tape	FAF00400



ABS SOLVENT CEMENT

Size	CODE
1/2 litre	SACO0200

N.B. Accessory discount applies to this item



FIBRE SEAL (SEALING TAPE FOR
THREADED CONNECTIONS)

Size	CODE
Fibre seal tape	FAF00100

Valves

All products on this page contain EPDM seals as standard.



IMPERIAL DOUBLE UNION BALL VALVE PLAIN

Size	CODE PVC-U	CODE ABS
1/2"	I7240200	S7240200
3/4"	I7240250	S7240250
1"	I7240320	S7240320
1 1/4"	I7240400	S7240400
1 1/2"	I7240500	S7240500
2"	I7240630	S7240630
2 1/2"	I7240750	S7240750
3"	I7240900	S7240900
4"	I7241100	S7241100



METRIC DOUBLE UNION BALL VALVE PLAIN

Size	CODE PVC-U
16	M7240160
20	M7240200
25	M7240250
32	M7240320
40	M7240400
50	M7240500
63	M7240630
75	M7240750
90	M7240900
110	M7241100



IMPERIAL DOUBLE UNION BALL VALVE THREADED

Size	CODE PVC-U
1/2"	T7240200
3/4"	T7240250
1"	T7240320
1 1/4"	T7240400
1 1/2"	T7240500
2"	T7240630
2 1/2"	T7240750
3"	T7240900
4"	T7241100



BUTTERFLY VALVE

Size	CODE PVC-U
50/1 1/2"	M8000500
63/2"	M8000630
75/2 1/2"	M8000750
90/3"	M8000900
110/4"	M8001100
140/5"	M8001400
160/6"	M8001600
225/8"	M8002250
280/10"	M8002800
315/12"	M8003150

Butterfly Valve fixing lugs available on request.

Valves

All products on this page contain EPDM seals as standard.



IMPERIAL DOUBLE UNION BALL VALVE PLAIN

Size	CODE PVC-U
1/2"	I3220200
3/4"	I3220250
1"	I3220320
1 1/4"	I3220400
1 1/2"	I3220500
2"	I3220630
2 1/2"	I3220750
3"	I3220900
4"	I3221100



METRIC DOUBLE UNION BALL VALVE PLAIN

Size	CODE PVC-U
20	M3220200
25	M3220250
32	M3220320
40	M3220400
50	M3220500
63	M3220630
75	M3220750
90	M3220900
110	M3221100



THREADED DOUBLE UNION BALL VALVE

Size	CODE PVC-U
1/2"	T3210200
3/4"	T3210250
1"	T3210320
1 1/4"	T3210400
1 1/2"	T3210500
2"	T3210630
2 1/2"	T3210750
3"	T3210900
4"	T3211100



3-WAY BALL VALVES T-PORT INCH PLAIN

Size	CODE PVC-U
1/2"	I9300200
3/4"	I9300250
1"	I9300320
1 1/4"	I9300400
1 1/2"	I9300500
2"	I9300630



3-WAY BALL VALVES T-PORT METRIC

Size	CODE PVC-U
20	M9300200
25	M9300250
32	M9300320
40	M9300400
50	M9300500
63	M9300630



3-WAY BALL VALVES T-PORT BSP THREADED

Size	CODE PVC-U
1/2"	T9310200
3/4"	T9310250
1"	T9310320
1 1/4"	T9310400
1 1/2"	T9310500
2"	T9310630



METRIC DOUBLE UNION NON RETURN VALVE PLAIN

Size	CODE PVC-U
16	M21N0160
20	M21N0200
25	M21N0250
32	M21N0320
40	M21N0400
50	M21N0500
63	M21N0630



THREADED DOUBLE UNION BALL NON RETURN VALVE

Size	CODE PVC-U
3/8"	T22N0160
1/2"	T22N0200
3/4"	T22N0250
1"	T22N0320
1 1/4"	T22N0400
1 1/2"	T22N0500
2"	T22N0630

Valves



PVC BALL VALVE WITH PE SPIGOT ENDS

Size	CODE PVC-U	
20	M3260200	MTO
25	M3260250	MTO
32	M3260320	MTO
40	M3260400	MTO
50	M3260500	MTO
63	M3260630	MTO



IMPERIAL DOUBLE UNION BALL NON RETURN VALVE PLAIN

Size	CODE PVC-U	
3/8"	I21N0160	
1/2"	I21N0200	
3/4"	I21N0250	
1"	I21N0320	
1 1/4"	I21N0400	
1 1/2"	I21N0500	
2"	I21N0630	



FOOT VALVE FILTER

Size	CODE PVC-U	
3/4"	TFLT0250	
1"	TFLT0320	
1 1/4"	TFLT0400	
1 1/2"	TFLT0500	
2"	TFLT0630	



WAFER CHECK VALVE

Size	CODE PVC-U	
50/1 1/2"	MCLP0500	
63/2"	MCLP0630	
75/2 1/2"	MCLP0750	
90/3"	MCLP0900	
110/4"	MCLP1100	
140/5"	MCLP1400	
160/6"	MCLP1600	
225/8"	MCLP2250	
280/10"	MCLP2800	
315/12"	MCLP3150	

Valves



THREADED DOUBLE UNION AIR RELEASE VALVE PLAIN

Size	CODE PVC-U	
3/8"	T22A0160	
1/2"	T22A0200	
3/4"	T22A0250	
1"	T22A0320	
1 1/4"	T22A0400	
1 1/2"	T22A0500	
2"	T22A0630	



IMPERIAL DOUBLE UNION SPRING CHECK VALVES PLAIN

Size	CODE PVC-U	
1/2"	I2300200	
3/4"	I2300250	
1"	I2300320	
1 1/4"	I2300400	
1 1/2"	I2300500	
2"	I2300630	



METRIC DOUBLE UNION SPRING CHECK VALVES BSP

Size	CODE PVC-U	
20	M2300200	
25	M2300250	
32	M2300320	
40	M2300400	
50	M2300500	
63	M2300630	



THREADED DOUBLE UNION SPRING CHECK VALVES PLAIN

Size	CODE PVC-U	
1/2"	T2300200	
3/4"	T2300250	
1"	T2300320	
1 1/4"	T2300400	
1 1/2"	T2300500	
2"	T2300630	



IMPERIAL SOLVENT DOUBLE UNION AIR RELEASE VALVE PLAIN

Size	CODE PVC-U	
3/8"	I21A0160	
1/2"	I21A0200	
3/4"	I21A0250	
1"	I21A0320	
1 1/4"	I21A0400	
1 1/2"	I21A0500	
2"	I21A0630	



METRIC SOLVENT DOUBLE UNION AIR RELEASE VALVE PLAIN

Size	CODE PVC-U	
16	M21A0160	
20	M21A0200	
25	M21A0250	
32	M21A0320	
40	M21A0400	
50	M21A0500	
63	M21A0630	

All products on this page contain EPDM seals as standard.

All products on this page contain EPDM seals as standard.

PVC-U & ABS Imperial

Standards

Astore products are manufactured generally in accordance with the following standards:

PVC-U Pipe – BS EN 1452 (BSI Kitemark Approval)
ABS Pipe – BS 5391 part 1
PVC-U Fittings – BS 4346 part 1
ABS Fittings – BS 5392 part 1 (BSI Kitemark Approval)
All PVC-U Fittings and Valves are FDA 21 CFR 181.32 approved – BS EN 10226

Materials

Materials used for the manufacture of Astore pressure pipe fittings and valves are selected for their non toxic properties and suitability for potable water as required by the appropriate international authorities.

Both ABS and PVC-U comply with BS EN ISO 277 and the requirements of the World Health Organisation for potable water transportation.

ABS

All material used in our manufacture conforms to the toxicological requirements of the British Plastics Federation/British Industrial Biological Research Association Code of Practice for Food Usage 45/5. It also fulfils the EU requirements for plastics materials in contact with foodstuffs.

UK Water Regulations Advisory Scheme:



Approved materials for potable water.

Approval Numbers:

ABS pipe – 1611541
ABS Fittings and valves – 1611542
One-Step ABS Solvent Cement – 1606551

PVC-U

Tin stabilised compounds are used exclusively for PVC-U products and all formulations conform to the EU safety criteria for vinyl chloride monomer (CVN).

UK Water Regulations Advisory Scheme:



Approved materials for potable water.

Approval Numbers:

PVC-U Pipe – 1510551
PVC-U Valves – 1505035
PVC-U Fittings & Valves – 1610500
One-Step PVC-U Solvent Cement – 1512500
RH THF Free PVC-U Solvent Cement – 1906508

Gasket Seals and Seats

Gaskets are made from Nitrile Rubber, O-Ring seals are made from EPDM, seats are PTFE except where stated otherwise.

Pressure Ratings

All pressure ratings given are at a temperature of 20°C.

For further information on all Astore UK products and services contact our Customer Services Team as detailed below.

Customer Services

Tel: 0844 800 5509
Fax: 01543 471682

www.astore.co.uk

Astore UK reserves the right to modify the details in this publication as products and specifications are updated and improved.

The content of this publication is for general information only and it is user's responsibility to determine the suitability of any product for the purpose intended.

The company reserves the right to substitute identical performing products from another range of greater or similar value where appropriate.

Astore UK is a trade name of Aliaxis UK, registered in England 01698059. Registered office: Dickley Lane, Lenham, Maidstone, Kent, ME17 2DE

Aliaxis UK
St. Peter's Road
Huntingdon
PE29 7DA
United Kingdom
+44 (0)330 111 4233

orders@aliaxis.co.uk

astore.co.uk

