



**Installer
guide**

Contents

Installation tips and jointing procedure 4

Safety information	4
Drying times	10
Notes	11
Solvent cement usage	11
Astore chemical resistance	11

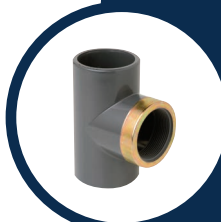
Maximum pressure/temperature relationship 12

PVC-U	12
ABS	13

Astore product range 14

PVC-U Pipes Imperial	16
ABS Pipes Imperial	17
Fittings Imperial	18
Backing Rings & Gaskets	34
PVC-U Pipes Metric	36
Fittings Metric	37
Fittings Metric/Imperial	43
Flanges Metric	50
Backing Rings & Gaskets	52
Pipe Brackets & Tools	54
Accessories - PVC-U & ABS	56
Valves	58

Contact us



Tel + 44 (0)1543 471680

Email enquiries@durapipe.co.uk

Web astore.co.uk



Installation tips and jointing procedure

The solvent cement operates by chemically softening the outside of the pipe and the inside of the fitting. Joint integrity is greatly reduced if these surfaces are not absolutely clean and properly prepared.

Safety information

- Ensure the area is well-ventilated
- **Do not** use near naked flames
- **Do not** smoke in the working area
- **Do not** use in confined spaces
- **Do not** joint in the rain or wet conditions
- **Do not** use dirty brushes
- **Do not** use dirty or oily cleaning cloths
- **Do not** use the same brushes for different cements
- **Do not** dilute or decant Astore solvent cement
- Follow safety instructions on Astore solvent cement and Eco-cleaner containers
- Always wear appropriate personal protective equipment



Step 1 – Cut pipe to length using a rotary plastic pipe cutter as shown. Where possible clamp the pipe in a vice, avoiding excessive distortion. The pipe must be cut square. The use of a rotary pipe cutter is preferred over the use of a hacksaw as the finish is clean, leaving no loose swarf or burr on the pipe. If a saw is used, it is essential that all burrs and loose materials are removed.



Step 2 – Chamfer the pipe, approximately 3mm x 45°. This prevents the solvent cement layer being scraped from the surface of the fitting when the joint is assembled.





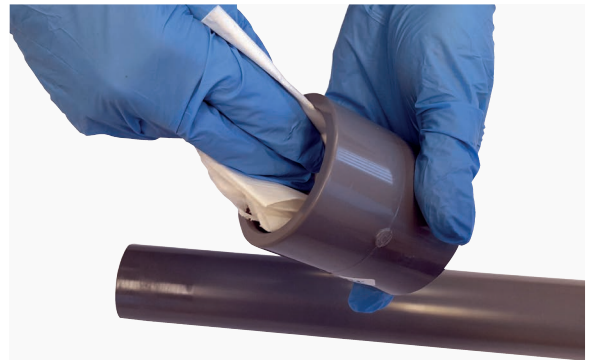
Step 3 – Measure the insertion depth of the fitting. Make two marks on the pipe; a) the insertion depth b) 20mm longer than the insertion depth.



Measurement “b” should be used to check that the pipe is fully inserted into the socket after assembly.



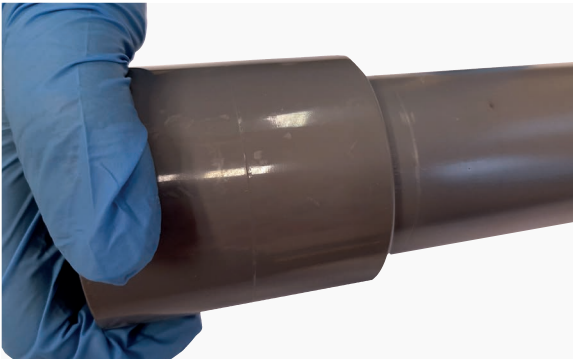
Step 4 – Thoroughly clean the surface of the pipe length to be inserted using a clean, lint free cloth or paper towel, moistened with Astore Eco-cleaner.



Repeat the cleaning process on the inside of the fitting.



Step 5 – Using a clean brush and working quickly, apply the Astore solvent cement to the pipe and fitting using longitudinal strokes. The insertion depth area should be completely covered with the cement. The amount required will vary with pipe diameter and the fit between pipe and fitting. Ensure that the cement is still liquid when pipe and fitting are assembled.



Step 6 – Immediately after application of cement, push pipe fully home into fitting. Do not twist. Hold pipe & fitting for times varying from a few seconds on sizes 1/2", to 1 minute on sizes 5" and above. It is important to create the joint swiftly, to enable assembly without excessive force being required.



Application of correct amount of cement will result in a neat bead at edge of fitting & pipe. Excessive deposits inside fittings must be avoided as these can weaken the pipe wall, particularly on small sizes. When working in cold conditions, ensure joints are free from frost & moisture and allow extra curing time to compensate for lower temperatures.



Step 7 – Wipe off excess cement from the outside of the joint. Joint drying time will vary due to fit, amount of solvent cement applied, ambient temperature & working pressure. See below for detailed information.

Drying times

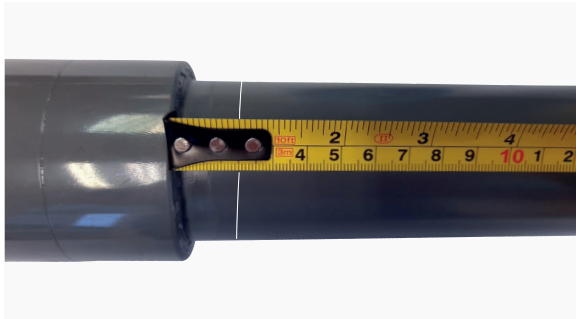
The following drying times are recommended:

- Minimum 24 hours for sizes up to 6"/160mm.

If the system needs to be put into service sooner, the following safe working guide can be used as long as:

- Ambient temperature is between 10–40 °C
- Fluid temperature does not exceed 20 °C
- Minimum drying period must be at least 1 hour

Size range	Up to 2.5" /75mm	3" to 4" /90mm to 125mm	5" & 6" /140mm & 160mm
Drying time ABS	0.5 hour /bar	1.0 hour /bar	1.5 hours /bar
Drying time PVC-U	1.0 hour /bar	1.0 hour /bar	1.5 hours /bar



Step 8 – Using measurement b (see point 3), check that the pipe has been fully inserted.

Step 9 – Do not disturb the joint for at least 10 minutes after assembly. On larger sizes do not subject the joint to bending or twisting forces for at least 4 hours (see below). When making subsequent joints, which can be done without waiting, take care not to transmit forces to freshly made joints in the system.

Important: Allow minimum drying time prior to pressurisation of the system.

Step 10 – Replace lids on all containers.

Notes

1. The integrity of Astore systems may be affected if Astore solvent cement and Astore Eco-cleaner are not used. Astore disclaims responsibility for any Astore system constructed with any other cement or not fabricated in accordance with the instructions herein.

2. To achieve the correct speed of application on sizes 5"/140mm and above, cement should be applied simultaneously to pipe and fitting, by two people.

Solvent cement usage

An indication of the number of joints to be made per litre of cement is as follows:

Size mm	Size inch	Recommended container size	Joints per litre ABS	Joints per litre PVC-U
20–32	3/8–1	0.5 litre	400	300
40–63	1 1/4–2	0.5 litre	200	120
75–110	2 1/2–4	0.5 litre	70	50
125–140	5	1 litre	20	15
160	6	1 litre	10	8

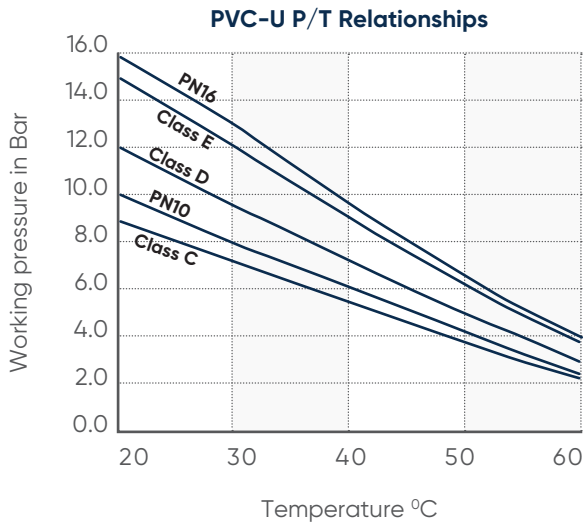
Astore chemical resistance

If you plan to transfer strong acids or alkalis through Astore pipework, please request advice regarding feasibility and grade of solvent cement and cleaner. www.aliaxis.co.uk/chemicalguide

Maximum pressure/ temperature relationship

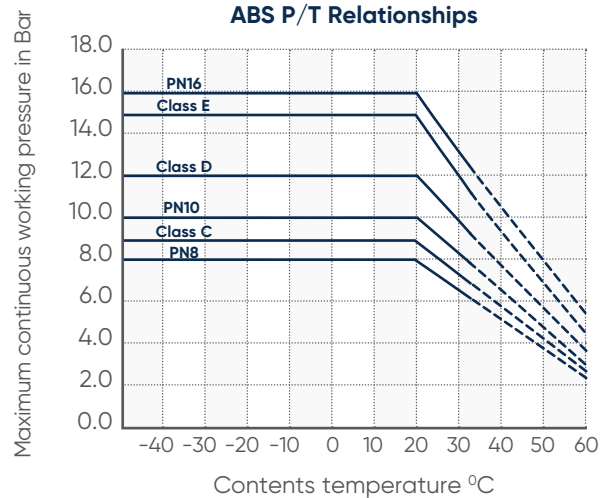
PVC-U

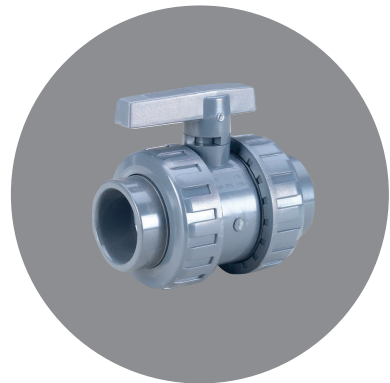
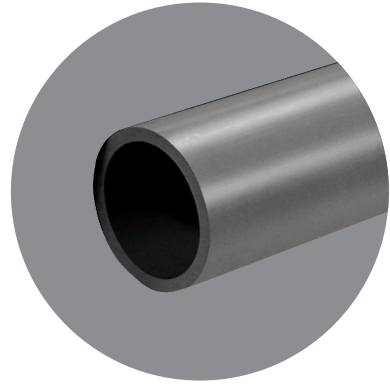
1. Graph is based on an ambient temperature of 20°C
2. For higher ambient temperatures decrease the working pressure by 5% for every 10°C above 20°C ambient
3. Astore PVC-U systems should not be used at temperatures in excess of +60°C or below 0°C



ABS

When temperature of content exceeds 20°C the working pressure of the system must be reduced accordingly (see table below).





PVC-U Pipes Imperial

WRAS Approved Pipe

PIPE PVC-U CLASS C

Size	CODE PVC-U
------	---------------

2"	RMRC0630
2 1/2"	RMRC0750
3"	RMRC0900
4"	RMRC1100
5"	RMRC1400
6"	RMRC1600



PIPE PVC-U CLASS E

Size	CODE PVC-U
------	---------------

1/2"	RMRE0200
3/4"	RMRE0250
1"	RMRE0320
1 1/4"	RMRE0400
1 1/2"	RMRE0500
2"	RMRE0630
2 1/2"	RMRE0750
3"	RMRE0900
4"	RMRE1100
5"	RMRE1400
6"	RMRE1600



All imperial PVC-U & ABS Pipes are available in 6 metre lengths

ABS Pipes Imperial

WRAS Approved Pipe

ABS PRESSURE PIPE CLASS C

Size	CODE ABS
------	-------------

1"	SPAC032A
1 1/4"	SPAC040A
1 1/2"	SPAC050A
2"	SPAC063A
2 1/2"	SPAC075A
3"	SPAC090A
4"	SPAC110A
5"	SPAC140A
6"	SPAC160A



ABS PRESSURE PIPE CLASS E

Size	CODE ABS
------	-------------

1/2"	SPAEO20A
3/4"	SPAEO25A
1"	SPAEO32A
1 1/4"	SPAEO40A
1 1/2"	SPAEO50A
2"	SPAEO63A
3"	SPAEO90A
4"	SPAET10A



ABS PRESSURE PIPE CLASS T

Size	CODE ABS
------	-------------

1/2"	SPAT020A
3/4"	SPAT025A
1"	SPAT032A
1 1/4"	SPAT040A
1 1/2"	SPAT050A
2"	SPAT063A

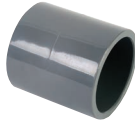


Class T for threading.

Fittings Imperial

SOCKET PLAIN

Size	CODE PVC-U	CODE ABS
1/2"	RMA40200	SMA40200
3/4"	RMA40250	SMA40250
1"	RMA40320	SMA40320
1 1/4"	RMA40400	SMA40400
1 1/2"	RMA40500	SMA40500
2"	RMA40630	SMA40630
2 1/2"	RMA10750	SMA40750
3"	RMA40900	SMA40900
4"	RMA41100	SMA41100
5"	RMA11400	SMA41400
6"	RMA41600	SMA41600



ELBOW 90° PLAIN

Size	CODE PVC-U	CODE ABS
1/2"	RGO40200	SGO40200
3/4"	RGO40250	SGO40250
1"	RGO40320	SGO40320
1 1/4"	RGO40400	SGO40400
1 1/2"	RGO40500	SGO40500
2"	RGO40630	SGO40630
2 1/2"	RGO10750	SGO40750
3"	RGO40900	SGO40900
4"	RGO41100	SGO41100
5"	RGO11400	SGO41400
6"	RGO41600	SGO41600



Fittings Imperial

ELBOW 45° PLAIN

Size	CODE PVC-U	CODE ABS
1/2"	RGY40200	SGY40200
3/4"	RGY40250	SGY40250
1"	RGY40320	SGY40320
1 1/4"	RGY40400	SGY40400
1 1/2"	RGY40500	SGY40500
2"	RGY40630	SGY40630
2 1/2"	RGY10750	SGY40750
3"	RGY40900	SGY40900
4"	RGY41100	SGY41100
5"	RGY11400	SGY41400
6"	RGY41600	SGY41600



BEND 90° PLAIN

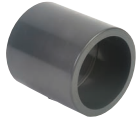
Size	CODE PVC-U	CODE ABS
1/2"	RCU40200	SCU40200
3/4"	RCU40250	SCU40250
1"	RCU40320	SCU40320
1 1/4"	RCU40400	SCU40400
1 1/2"	RCU40500	SCU40500
2"	RCU40630	SCU40630
2 1/2"	RCU10750	SCU40750
3"	RCU40900	SCU40900
4"	RCU41100	SCU41100



Fittings Imperial

INCH/METRIC SOCKET PLAIN

Size	CODE PVC-U	CODE ABS
1/2" x 20mm	RMA50200	SMA50200
3/4" x 25mm	RMA50250	SMA50250
1" x 32mm	RMA50320	SMA50320
1 1/4" x 40mm	RMA50400	SMA50400
1 1/2" x 50mm	RMA50500	SMA50500
2" x 63mm	RMA50630	SMA50630
3" x 90mm	RMA50900	SMA50900
4" x 110mm	RMA51100	SMA51100



TEE 90° PLAIN

Size	CODE PVC-U	CODE ABS
1/2"	RTI40200	STI40200
3/4"	RTI40250	STI40250
1"	RTI40320	STI40320
1 1/4"	RTI40400	STI40400
1 1/2"	RTI40500	STI40500
2"	RTI40630	STI40630
2 1/2"	RTI10750	STI40750
3"	RTI40900	STI40900
4"	RTI41100	STI41100
5"	RTI11400	STI41400
6"	RTI41600	STI41600



Fittings Imperial

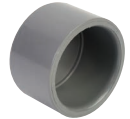
UNION PLAIN

Size	CODE PVC-U	CODE ABS
1/2"	RBO40200	SBO40200
3/4"	RBO40250	SBO40250
1"	RBO40320	SBO40320
1 1/4"	RBO40400	SBO40400
1 1/2"	RBO40500	SBO40500
2"	RBO40630	SBO40630
2 1/2"	RBO10750	SBO40750
3"	RBO40900	SBO40900
4"	RBO41100	SBO41100



END CAP PLAIN

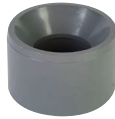
Size	CODE PVC-U	CODE ABS
1/2"	RCA40200	SCA40200
3/4"	RCA40250	SCA40250
1"	RCA40320	SCA40320
1 1/4"	RCA40400	SCA40400
1 1/2"	RCA40500	SCA40500
2"	RCA40630	SCA40630
2 1/2"	RCA10750	SCA40750
3"	RCA40900	SCA40900
4"	RCA41100	SCA41100
5"	RCA11400	-
6"	RCA41600	-



Fittings Imperial

REDUCING BUSH PLAIN

Size	CODE PVC-U	CODE ABS
3/4" x 1/2"	RRC4025B	SRC4025B
1" x 1/2"	RRC4032B	SRC4032B
1" x 3/4"	RRC4032C	SRC4032C
1 1/4" x 1"	RRC4040D	SRC4040D
1 1/2" x 3/4"	RRC4050C	SRC4050C
1 1/2" x 1"	RRC4050D	SRC4050D
1 1/2" x 1 1/4"	RRC4050E	SRC4050E
2" x 1"	RRC4063D	SRC4063D
2" x 1 1/4"	RRC4063E	SRC4063E
2" x 1 1/2"	RRC4063F	SRC4063F
2 1/2" x 2"	RRC4075G	SRC4075G
3" x 1 1/2"	RRC4090F	SRC4090F
3" x 2"	RRC4090G	SRC4090G
3" x 2 1/2"	RRC4090H	SRC4090H
4" x 2"	RRC4110G	SRC4110G
4" x 3"	RRC4110I	SRC4110I
5" x 4"	RRC4140L	SRC4140L
6" x 4"	RRC4160L	SRC4160L



BEND LONG RADIUS 90 DEGREE

Size	CODE PVC-U	CODE ABS
3"	RLU40900	SLU40900 MTO
4"	RLU41100	SLU41100 MTO
6"	RLU41600	SLU41600 MTO



LONG RADIUS 45 DEGREE

Size	CODE PVC-U	CODE ABS
1 1/2"	-	SLY40500 MTO
2"	RLY40630	SLY40630 MTO
3"	RLY40900	SLY40900 MTO
4"	RLY41100	SLY41100 MTO



Fittings Imperial

BEND LONG RADIUS 22 1/2 DEGREE

Size	CODE PVC-U	CODE ABS
1 1/2"	RLT40500	SLT40500 MTO
2"	RLT40630	SLT40630 MTO
3"	RLT40900	SLT40900 MTO
4"	RLT41100	SLT41100 MTO
6"	RLT41600	SLT41600 MTO



SOCKET PLAIN/THREADED

Size	CODE PVC-U	CODE ABS
1/2"	RMA60200	SMA60200
3/4"	RMA60250	SMA60250
1"	RMA60320	SMA60320
1 1/4"	RMA60400	SMA60400
1 1/2"	RMA60500	SMA60500
2"	RMA60630	SMA60630
2 1/2"	RMA30750H	-
3"	RMA60900	-
4"	RMA61100	-



ELBOW 90° PLAIN/THREADED

Size	CODE PVC-U	CODE ABS
1/2"	RGO60200	SGO60200
3/4"	RGO60250	SGO60250
1"	RGO60320	SGO60320
1 1/4"	RGO60400	SGO60400
1 1/2"	RGO60500	SGO60500
2"	RGO60630	SGO60630
2 1/2"	RGO3075H	-
3"	RGO60900	-



Fittings Imperial

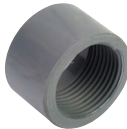
TEE PLAIN/THREADED BRANCH

Size	CODE PVC-U
1/2"	RTI60200
3/4"	RTI60250
1"	RTI60320
1 1/4"	RTI60400
1 1/2"	RTI60500
2"	RTI60630



REDUCING BUSH PLAIN/THREADED

Size	CODE PVC-U	CODE ABS
1/2" x 3/8"	RRC6020A	SRC6020A
3/4" x 1/2"	RRC6025B	SRC6025B
1" x 3/4"	RRC6032C	SRC6032C



ADAPTOR MALE PLAIN/FEMALE THREADED

Size	CODE PVC-U	CODE ABS
1/2"	RAF60200	SAF60200
3/4"	RAF60250	SAF60250
1"	RAF60320	SAF60320
1 1/4"	RAF60400	SAF60400
1 1/2"	RAF60500	SAF60500
2"	RAF60630	SAF60630



Fittings Imperial

ADAPTOR FEMALE PLAIN/MALE THREADED

Size	CODE PVC-U	CODE ABS
1/2"	RAM60200	SAM60200
3/4"	RAM60250	SAM60250
1"	RAM60320	SAM60320
1 1/4"	RAM60400	SAM60400
1 1/2"	RAM60500	SAM60500
2"	RAM60630	SAM60630
2 1/2"	RAM30750H	-
3"	RAM60900	-



UNION PLAIN/THREADED

Size	CODE PVC-U
1/2"	RBO60200
3/4"	RBO60250
1"	RBO60320
1 1/4"	RBO60400
1 1/2"	RBO60500
2"	RBO60630



BARREL NIPPLE PLAIN/THREADED

Size	CODE PVC-U	CODE ABS
3/8"	RBN60160	-
1/2"	RBN60200	SBN60200
3/4"	RBN60250	SBN60250
1"	RBN60320	SBN60320
1 1/4"	RBN60400	SBN60400
1 1/2"	RBN60500	SBN60500
2"	RBN60630	SBN60630
2 1/2"	RBN60750	SBN60750
3"	RBN60900	SBN60900
4"	RBN61100	SBN61100



Fittings Imperial

TANK CONNECTOR PLAIN/THREADED

Size	CODE PVC-U	CODE ABS
1/2"	RTC60200	STC60200
3/4"	RTC60250	STC60250
1"	RTC60320	STC60320
1 1/4"	RTC60400	STC60400
1 1/2"	RTC60500	STC60500
2"	RTC60630	STC60630
2 1/2"	RTC60750	STC60750
3"	RTC60900	STC60900
4"	RTC61100	STC61100



COMPOSITE UNION FEMALE BSP BRASS

Size	CODE PVC-U	CODE ABS
1/2"	RFB60200	SFB60200
3/4"	RFB60250	SFB60250
1"	RFB60320	SFB60320
1 1/4"	RFB60400	SFB60400
1 1/2"	RFB60500	SFB60500
2"	RFB60630	SFB60630



COMPOSITE UNION MALE BSP BRASS

Size	CODE PVC-U	CODE ABS
1/2"	RMB60200	SMB60200
3/4"	RMB60250	SMB60250
1"	RMB60320	SMB60320
1 1/4"	RMB60400	SMB60400
1 1/2"	RMB60500	SMB60500
2"	RMB60630	SMB60630



Fittings Imperial

HOSE ADAPTOR BSP THREADED/METRIC

Size	CODE PVC-U
3/8"	RPO3016A
1/2"	RPO3020B
3/4"	RPO3025C
1"	RPO3032D
1 1/4"	RPO3040E
1 1/2"	RPO3050F
2"	RPO3063G



SOCKET THREADED

Size	CODE PVC-U
3/8"	RMA20160
1/2"	RMA20200
3/4"	RMA20250
1"	RMA20320
1 1/4"	RMA20400
1 1/2"	RMA20500
2"	RMA20630
2 1/2"	RMA20750
3"	RMA20900
4"	RMA21100



ELBOW 90° THREADED

Size	CODE PVC-U
3/8"	RGO20160
1/2"	RGO20200
3/4"	RGO20250
1"	RGO20320
1 1/4"	RGO20400
1 1/2"	RGO20500
2"	RGO20630
2 1/2"	RGO20750
3"	RGO20900
4"	RGO21100



Fittings Imperial

TEE THREADED

Size	CODE PVC-U
3/8"	RTI20160
1/2"	RTI20200
3/4"	RTI20250
1"	RTI20320
1 1/4"	RTI20400
1 1/2"	RTI20500
2"	RTI20630
2 1/2"	RTI20750
3"	RTI20900
4"	RTI21100



PLUG THREADED

Size	CODE PVC-U
3/8"	RTA20160
1/2"	RTA20200
3/4"	RTA20250
1"	RTA20320
1 1/4"	RTA20400
1 1/2"	RTA20500
2"	RTA20630
2 1/2"	RTA20750
3"	RTA20900
4"	RTA21100



Fittings Imperial

HEXAGON NIPPLE THREADED

Size	CODE PVC-U
3/8"	RNI20160
1/2"	RNI20200
3/4"	RNI20250
1"	RNI20320
1 1/4"	RNI20400
1 1/2"	RNI20500
2"	RNI20630
2 1/2"	RNI20750
3"	RNI20900
4"	RNI21100



REDUCING NIPPLE THREADED

Size	CODE PVC-U
1/2" x 3/8"	RNR2020A
3/4" x 1/2"	RNR2025B
1" x 3/4"	RNR2032C
1 1/4" x 1"	RNR2040D
1 1/2" x 1 1/4"	RNR2050E
2" x 1 1/2"	RNR2063F
2 1/2" x 2"	RNR2075G
3" x 2 1/2"	RNR2090H
4" x 3"	RNR2110I



Fittings Imperial

REDUCING PIECE FEMALE THREADED/MALE THREADED

Size	CODE PVC-U
1/2" x 3/8"	RMG2016B
3/4" x 1/2"	RMG2020C
1" x 3/4"	RMG2025D
1 1/4" x 1"	RMG2032E
1 1/2" x 1 1/4"	RMG2040F
2" x 1 1/2"	RMG2050G
2 1/2" x 2"	RMG2063H
3" x 2 1/2"	RMG2075I
4" x 3"	RMG2090L



REDUCING PIECE FEMALE THREADED

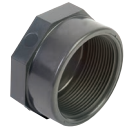
Size	CODE PVC-U
1/2" x 3/8"	RMR2020A
3/4" x 1/2"	RMR2025B
1" x 3/4"	RMR2032C
1 1/4" x 1"	RMR2040D
1 1/2" x 1 1/4"	RMR2050E
2" x 1 1/2"	RMR2063F
2 1/2" x 2"	RMR2075G
3" x 2 1/2"	RMR2090H
4" x 3"	RMR2110I



Fittings Imperial

END CAP THREADED

Size	CODE PVC-U
1/2"	RCA20200
3/4"	RCA20250
1"	RCA20320
1 1/4"	RCA20400
1 1/2"	RCA20500
2"	RCA20630
2 1/2"	RCA20750
3"	RCA20900
4"	RCA21100



REDUCING PIECE MALE THREADED/FEMALE THREADED

Size	CODE PVC-U
1/2" x 3/8"	RRI2020A
3/4" x 1/2"	RRI2025B
1" x 1/2"	RRI2032B
1" x 3/4"	RRI2032C
1 1/4" x 1/2"	RRI2040B
1 1/4" x 3/4"	RRI2040C
1 1/4" x 1"	RRI2040D
1 1/2" x 3/4"	RRI2050C
1 1/2" x 1"	RRI2050D
1 1/2" x 1 1/4"	RRI2050E
2" x 1"	RRI2063D
2" x 1 1/4"	RRI2063E
2" x 1 1/2"	RRI2063F
2 1/2" x 1 1/4"	RRI2075E
2 1/2" x 1 1/2"	RRI2075F
2 1/2" x 2"	RRI2075G
3" x 1 1/2"	RRI2090F
3" x 2"	RRI2090G
3" x 2 1/2"	RRI2090H
4" x 2"	RRI2110G
4" x 2 1/2"	RRI2110H
4" x 3"	RRI2110I



Fittings Imperial

UNION THREADED

Size	CODE PVC-U
1/2"	RBO20200
3/4"	RBO20250
1"	RBO20320
1 1/4"	RBO20400
1 1/2"	RBO20500
2"	RBO20630
2 1/2"	RBO20750
3"	RBO20900
4"	RBO21100



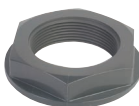
ELBOW 45° THREADED

Size	CODE PVC-U
1/2"	RGY20200
3/4"	RGY20250
1"	RGY20320
1 1/4"	RGY20400
1 1/2"	RGY20500
2"	RGY20630
2 1/2"	RGY20750
3"	RGY20900
4"	RGY21100



BACK NUT THREADED

Size	CODE PVC-U	CODE ABS
1/2"	RNU20200	SNU20200
3/4"	RNU20250	SNU20250
1"	RNU20320	SNU20320
1 1/4"	RNU20400	SNU20400
1 1/2"	RNU20500	SNU20500
2"	RNU20630	SNU20630
2 1/2"	RNU20750	SNU2075N
3"	RNU2090N	SNU2090N
4"	RNU2110N	SNU2110N



Flanges Imperial

FULL FACE FLANGE PN16

Size	CODE PVC-U	CODE ABS
1/2"	RFFN0200	SFFN0200
3/4"	RFFN0250	SFFN0250
1"	RFFN0320	SFFN0320
1 1/4"	RFFN0400	SFFN0400
1 1/2"	RFFN0500	SFFN0500
2"	RFFN0630	SFFN0630
2 1/2"	RFFN10750	SFFN0750
3"	RFFN0900	SFFN0900
4"	RFFN1100	SFFN1100



BLANK FLANGE DRILLED PN16

Size	CODE PVC-U	CODE ABS
1/2"	RFCN0200	-
3/4"	RFCN0250	-
1"	RFCN0320	-
1 1/2"	RFCN0500	-
2"	RFCN0630	SFCN0630
3"	RFCN0900	SFCN0900
4"	RFCN1100	SFCN1100
6"	RFCN1600	SFCN1600



STUB FLANGE SERRATED FACE

Size	CODE PVC-U	CODE ABS	
1/2"	RQR40200	-	MTO
3/4"	RQR40250	-	MTO
1"	RQR40320	-	MTO
1 1/4"	RQR40400	-	MTO
1 1/2"	RQR40500	-	MTO
2"	RQR40630	SQR40630	MTO
2 1/2"	RQR10750	SQR40750	MTO
3"	RQR40900	SQR40900	MTO
4"	RQR41100	SQR41100	MTO
5"	RQR11400	SQR41400	MTO
6"	RQR41600	SQR41600	MTO



Backing Rings & Gaskets

GASKET-FULL FACE DRILLED PN16

Size	CODE
1/2"	EGFN0200
3/4"	EGFN0250
1"	EGFN0320
1 1/4"	EGFN0400
1 1/2"	EGFN0500
2"	EGFN0630
2 1/2"	EGFN0750
3"	EGFN0900
4"	EGFN1100
4"	EGFN110E
6"	EGFN1600



BACKING RING - GALVANISED MILD STEEL DRILLED PN16

Size	CODE
1/2"	GBR4020N
3/4"	GBR4025N
1"	GBR4032N
1 1/4"	GBR4040N
1 1/2"	GBR4050N
2"	GBR4063N
2 1/2"	GBR4075N
3"	GBR4090N
4"	GBR4110N
5"	GBR4140N
6"	GBR4160N



These items are suitable with both ABS & PVC-U systems.

Backing Rings & Gaskets

GASKET-STUB FLANGE FOR QR4 STUBS

Size	CODE
1/2"	EGQP0200
3/4"	EGQP0250
1"	EGQP0320
1 1/4"	EGQP0400
1 1/2"	EGQP0500
2"	EGQP0630
2 1/2"	EGQP0750
3"	EGQP0900
4"	EGQP1100
5"	EGQP1400
6"	EGQP1600



These items are suitable with both ABS & PVC-U systems.

PVC-U Pipes Metric

WRAS Approved Pipe

PIPE PVC-U PN10 PLAIN END

Size	CODE PVC-U	
32	RM100320	
40	RM100400	
50	RM100500	
63	RM100630	
75	RM100750	
90	RM100900	
110	RM101100	
125	RM101250	MTO
140	RM101400	MTO
160	RM101600	MTO



PIPE PVC-U PN10 PLAIN END

Size	CODE PVC-U	
20	RM160200	
25	RM160250	
32	RM160320	
40	RM160400	
50	RM160500	
63	RM160630	
75	RM160750	
90	RM160900	
110	RM161100	
125	RM161250	MTO
140	RM161400	MTO
160	RM161600	MTO

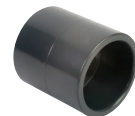


All metric PVC-U pipes are available in 5 metre lengths.

Fittings Metric

SOCKET PLAIN*

Size	CODE PVC-U
20	RMA10200
25	RMA10250
32	RMA10320
40	RMA10400
50	RMA10500
63	RMA10630
75	RMA10750
90	RMA10900
110	RMA11100
125	RMA11250
140	RMA11400
160	RMA11600



ELBOW 90° PLAIN*

Size	CODE PVC-U
20	RG010200
25	RG010250
32	RG010320
40	RG010400
50	RG010500
63	RG010630
75	RG010750
90	RG010900
110	RG011100
125	RG011250
140	RG011400
160	RG011600



Fittings Metric

ELBOW 45° PLAIN

Size	CODE PVC-U
20	RGY10200
25	RGY10250
32	RGY10320
40	RGY10400
50	RGY10500
63	RGY10630
75	RGY10750
90	RGY10900
110	RGY11100
125	RGY11250
140	RGY11400
160	RGY11600



TEE 90° PLAIN

Size	CODE PVC-U
20	RTI10200
25	RTI10250
32	RTI10320
40	RTI10400
50	RTI10500
63	RTI10630
75	RTI10750
90	RTI10900
110	RTI11100
125	RTI11250
140	RTI11400
160	RTI11600



Fittings Metric

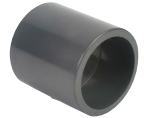
UNION PLAIN

Size	CODE PVC-U
20	RBO10200
25	RBO10250
32	RBO10320
40	RBO10400
50	RBO10500
63	RBO10630
75	RBO10750
90	RBO10900
110	RBO11100



METRIC/INCH SOCKET PLAIN

Size	CODE PVC-U
1/2" x 20mm	RMA50200
3/4" x 25mm	RMA50250
1" x 32mm	RMA50320
1 1/4" x 40mm	RMA50400
1 1/2" x 50mm	RMA50500
2" x 63mm	RMA50630
3" x 90mm	RMA50900
4" x 110mm	RMA51100



TEE 45° PLAIN

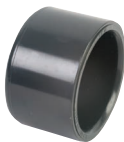
Size	CODE PVC-U
32	RTY10320
40	RTY10400
50	RTY10500
63	RTY10630



Fittings Metric

END CAP PLAIN

Size	CODE PVC-U
20	RCA10200
25	RCA10250
32	RCA10320
40	RCA10400
50	RCA10500
63	RCA10630
75	RCA10750
90	RCA10900
110	RCA11100
125	RCA11250
140	RCA11400
160	RCA11600



BEND 90° PLAIN

Size	CODE PVC-U
20	RCU10200
25	RCU10250
32	RCU10320
40	RCU10400
50	RCU10500
63	RCU10630
75	RCU10750
90	RCU10900
110	RCU11100



REDUCING PIECE MALE PLAIN / FEMALE PLAIN

Size	CODE PVC-U
160 x 110	RRL1160L



Fittings Metric

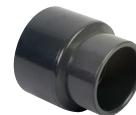
CROSS PLAIN

Size	CODE PVC-U
25	RCR10250
32	RCR10320
40	RCR10400
50	RCR10500
63	RCR10630



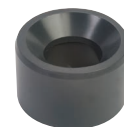
REDUCING SOCKET PLAIN

Size	CODE PVC-U
25 x 20	RMR1025B
32 x 25	RMR1032C
40 x 32	RMR1040D
50 x 40	RMR1050E
63 x 50	RMR1063F
75 x 63	RMR1075G
90 x 75	RMR1090H
110 x 90	RMR110I
125 x 110	RMR1125L
140 x 110	RMR1140L



REDUCING BUSH PLAIN

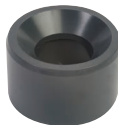
Size	CODE PVC-U
25 x 16	RRC1025A
25 x 20	RRC1025B
32 x 16	RRC1032A
32 x 20	RRC1032B



Fittings Metric

REDUCING BUSH PLAIN (continued)

Size	CODE PVC-U
32 x 25	RRC1032C
40 x 20	RRC1040B
40 x 25	RRC1040C
40 x 32	RRC1040D
50 x 25	RRC1050C
50 x 32	RRC1050D
50 x 40	RRC1050E
63 x 32	RRC1063D
63 x 40	RRC1063E
63 x 50	RRC1063F
75 x 40	RRC1075E
75 x 50	RRC1075F
75 x 63	RRC1075G
90 x 50	RRC1090F
90 x 63	RRC1090G
90 x 75	RRC1090H
110 x 63	RRC1110G
110 x 75	RRC1110H
110 x 90	RRC1110I
125 x 75	RRC1125H
125 x 90	RRC1125I
125 x 110	RRC1125L
140 x 90	RRC1140I
140 x 110	RRC1140L
140 x 125	RRC1140M
160 x 110	RRC1160L
160 x 125	RRC1160M
160 x 140	RRC1160N



Fittings Metric/Imperial

SOCKET PLAIN/BSP THREADED

Size	CODE PVC-U
20 x 1/2"	RMA3020B
25 x 3/4"	RMA3025C
32 x 1"	RMA3032D
40 x 1 1/4"	RMA3040E
50 x 1 1/2"	RMA3050F
63 x 2"	RMA3063G
75 x 2 1/2"	RMA3075H
90 x 3"	RMA3090I
110 x 4"	RMA3110L



ELBOW 90° PLAIN/BSP THREADED

Size	CODE PVC-U
20 x 1/2"	RGO3020B
25 x 3/4"	RGO3025C
32 x 1"	RGO3032D
40 x 1 1/4"	RGO3040E
50 x 1 1/2"	RGO3050F
63 x 2"	RGO3063G
75 x 2 1/2"	RGO3075H
90 x 3"	RGO3090I
110 x 4"	RGO3110L



Fittings Metric/Imperial

TEE 90° PLAIN/BSP THREADED BRANCH

Size	CODE PVC-U
20 x 20 x 1/2"	RTI3020B
25 x 25 x 3/4"	RTI3025C
32 x 32 x 1"	RTI3032D
40 x 40 x 1 1/4"	RTI3040E
50 x 50 x 1 1/2"	RTI3050F
63 x 63 x 2"	RTI3063G
75 x 75 x 2 1/2"	RTI3075H
90 x 90 x 3"	RTI3090I
110 x 110 x 4"	RTI3110L



UNION PLAIN/BSP THREADED

Size	CODE PVC-U
20 x 1/2"	RBO3020B
25 x 3/4"	RBO3025C
32 x 1"	RBO3032D
40 x 1 1/4"	RBO3040E
50 x 1 1/2"	RBO3050F
63 x 2"	RBO3063G
75 x 2 1/2"	RBO3075H
90 x 3"	RBO3090I
110 x 4"	RBO3110L



Fittings Metric/Imperial

ADAPTOR PLAIN SPIGOT/BSP THREADED FEMALE

Size	CODE PVC-U
20 x 1/2"	RAF3020B
20 x 3/4"	RAF3020C
25 x 1/2"	RAF3025B
25 x 3/4"	RAF3025C
25 x 1"	RAF3025D
32 x 3/4"	RAF3032C
32 x 1"	RAF3032D
40 x 1"	RAF3040D
40 x 1 1/4"	RAF3040E
50 x 1 1/2"	RAF3050F
50 x 2"	RAF3050G
63 x 2"	RAF3063G
75 x 2"	RAF3075G
75 x 2 1/2"	RAF3075H
75 x 3"	RAF3075I
90 x 2 1/2"	RAF3090H
90 x 3"	RAF3090I
90 x 4"	RAF3090L
110 x 3"	RAF3110I
110 x 4"	RAF3110L



METRIC PVC TANK CONNECTOR

Size	CODE PVC-U
3/4" x 16 x 1/2"	RAS3016B
1" x 20 x 3/4"	RAS3020C
1 1/4" x 25 x 1"	RAS3025D
1 1/2" x 32 x 1"	RAS3032D
2" x 40 x 1 1/2"	RAS3040F



Fittings Metric/Imperial

ADAPTOR PLAIN FEMALE/BSP THREADED MALE SPIGOT

Size	CODE PVC-U
20 x 25 x 1/2"	RAM3020B
20 x 25 x 3/4"	RAM3020C
25 x 32 x 1/2"	RAM3025B
25 x 32 x 3/4"	RAM3025C
25 x 32 x 1"	RAM3025D
32 x 40 x 3/4"	RAM3032C
32 x 40 x 1"	RAM3032D
32 x 40 x 1 1/4"	RAM3032E
40 x 50 x 1"	RAM3040D
40 x 50 x 1 1/4"	RAM3040E
40 x 50 x 1 1/2"	RAM3040F
50 x 63 x 1 1/4"	RAM3050E
50 x 63 x 1 1/2"	RAM3050F
50 x 63 x 2"	RAM3050G
63 x 75 x 1 1/2"	RAM3063F
63 x 75 x 2"	RAM3063G
63 x 75 x 2 1/2"	RAM3063H
75 x 90 x 2"	RAM3075G
75 x 90 x 2 1/2"	RAM3075H
75 x 90 x 3"	RAM3075I
90 x 110 x 2 1/2"	RAM3090H
90 x 110 x 3"	RAM3090I
90 x 110 x 4"	RAM3090L
110 x 125 x 3"	RAM3110I
110 x 125 x 4"	RAM3110L



Fittings Metric/Imperial

ADAPTOR PLAIN/BSP THREADED WITH METAL REINFORCING RING

Size	CODE PVC-U
20 x 1/2"	RRM3020B
25 x 1/2"	RRM3025B
25 x 3/4"	RRM3025C
32 x 3/4"	RRM3032C
32 x 1"	RRM3032D
40 x 1"	RRM3040D
40 x 1 1/4"	RRM3040E
50 x 1 1/2"	RRM3050F
50 x 2"	RRM3050G
63 x 2"	RRM3063G



ADAPTOR PLAIN/BSP THREADED WITH METAL REINFORCING RING

Size	CODE PVC-U
20 x 1/2"	RMM3020B
25 x 3/4"	RMM3025C
32 x 1"	RMM3032D
40 x 1 1/4"	RMM3040E
50 x 1 1/2"	RMM3050F
63 x 2"	RMM3063G



ADAPTOR PLAIN/BSP THREADED WITH METAL REINFORCING RING

Size	CODE PVC-U
20 x 1/2"	RGM3020B
25 x 3/4"	RGM3025C
32 x 1"	RGM3032D
40 x 1 1/4"	RGM3040E
50 x 1 1/2"	RGM3050F
63 x 2"	RGM3063G



Fittings Metric/Imperial

ADAPTOR PLAIN/BSP THREADED WITH METAL REINFORCING RING

Size	CODE PVC-U
20 x 1/2"	RTM3020B
25 x 3/4"	RTM3025C
32 x 1"	RTM3032D
40 x 1 1/4"	RTM3040E
50 x 1 1/2"	RTM3050F
63 x 2"	RTM3063G



HOSE ADAPTOR BSP THREADED/METRIC

Size	CODE PVC-U
1/2" x 20	RPO3020B
3/4" x 25	RPO3025C
1" x 32	RPO3032D
1 1/4" x 40	RPO3040E
1 1/2" x 50	RPO3050F
2" x 63	RPO3063G



UNION PLAIN/MALE BSP

Size	CODE PVC-U
50 x 1 1/2"	RBM3050F
50 x 2"	RBM3050G
63 x 2"	RBM3063G



Fittings Metric/Imperial

COMPOSITE UNION PVC MALE BSP BRASS

Size	CODE PVC-U
20 x 1/2"	RMB3020B
25 x 3/4"	RMB3025C
32 x 1"	RMB3032D
40 x 1 1/4"	RMB3040E
50 x 1 1/2"	RMB3050F
63 x 2"	RMB3063G



COMPOSITE UNION PVC FEMALE BSP BRASS

Size	CODE PVC-U
20 x 1/2"	RFB3020B
25 x 3/4"	RFB3025C
32 x 1"	RFB3032D
40 x 1 1/4"	RFB3040E
50 x 1 1/2"	RFB3050F
63 x 2"	RFB3063G



Flanges Metric

BLANK FLANGE DRILLED BS 4504 PN16

Size	CODE
20	RFC10200
25	RFC10250
32	RFC10320
40	RFC10400
50	RFC10500
63	RFC10630
75	RFC10750
90	RFC10900
110	RFC11100
160	RFC11600



FULL FACE FLANGE PLAIN/ DRILLED BS 4504 PN10/16

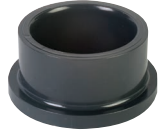
Size	CODE
20	RFF10200
25	RFF10250
32	RFF10320
40	RFF10400
50	RFF10500
63	RFF10630
75	RFF10750
90	RFF10900
110	RFF11100



Flanges Metric

STUB FLANGE SERRATED FACE

Size	CODE
20	RQR10200
25	RQR10250
32	RQR10320
40	RQR10400
50	RQR10500
63	RQR10630
75	RQR10750
90	RQR10900
110	RQR11100
125	RQR11250
140	RQR11400
160	RQR11600



LOOSE FLANGE DRILLED BS 4504 PN16

Size	CODE
20	RFL10200
25	RFL10250
32	RFL10320
40	RFL10400
50	RFL10500
63	RFL10630
75	RFL10750
90	RFL10900
110	RFL11100
125	RFL11250
140	RFL11400
160	RFL11600



Backing Rings & Gaskets

GASKET FULL FACE DRILLED PN16

Size	CODE
20	EGFN0200
25	EGFN0250
32	EGFN0320
40	EGFN0400
50	EGFN0500
63	EGFN0630
75	EGFN0750
90	EGFN0900
110	EGFN1100



BACKING RING GALVANISED MILD STEEL DRILLED PN16

Size	CODE
20	GBR10200
25	GBR10250
32	GBR10320
40	GBR10400
50	GBR10500
63	GBR10630
75	GBR10750
90	GBR10900
110	GBR11100
160	GBR11600



Backing Rings & Gaskets

GASKET STUB FLANGE FOR QR1 STUBS

Size	CODE
20	EGQP0200
25	EGQP0250
32	EGQP0320
40	EGQP0400
50	EGQP0500
63	EGQP0630
75	EGQP0750
90	EGQP0900
110	EGQP1100
125	EGQP1250
140	EGQP1400
160	EGQP1600



These are suitable with both ABS & PVC-U systems.

Pipe Brackets & Tools

PIPE BRACKET

Size	CODE
3/8"	PST40160
1/2"	PST40200
3/4"	PST40250
1"	PST40320



PIPE BRACKET

Size	CODE
20	PST10200
25	PST10250
32	PST10320



PIPE BRACKET WITH STRAP

Size	CODE
1 1/4"	PST40400
1 1/2"	PST40500
2"	PST40630
2 1/2"	PST10750
3"	PST40900
4"	PST41100



PIPE BRACKET WITH STRAP

Size	CODE
40	PST10400
50	PST10500
63	PST10630
75	PST10750
90	PST10900
110	PST11100



These are suitable with both ABS & PVC-U systems.

Pipe Brackets & Tools

PIPE CUTTER

Size	CODE
16-63mm	TTF00100
50-125mm	TTF00101
16-63mm spare cutter wheel	TTF00102
50-125mm spare cutter wheel	TTF00103



CHAMFERING TOOLS

Size	CODE
16-63mm chamfering tool	CAF00100
32-160mm chamfering tool	CAF00102



Accessories - PVC-U & ABS

PVC-U SOLVENT CEMENT

Size	CODE
1/2 litre	RPCO0200

N.B. Accessory discount applies to this item



ASTORE ECO CLEANER (ABS/PVC-U)

Size	CODE
1/2 litre	MCFO0200

N.B. Accessory discount applies to this item



SILICONE REPAIR TAPE

Size	CODE
Silicone repair tape	FAF00400



ABS SOLVENT CEMENT

Size	CODE
1/2 litre	SACO0200

N.B. Accessory discount applies to this item



FIBRE SEAL (SEALING TAPE FOR THREADED CONNECTIONS)

Size	CODE
Fibre seal tape	FAF00100



Valves

IMPERIAL DOUBLE UNION BALL VALVE PLAIN

Size	CODE	
	PVC-U	ABS
1/2"	I7240200	S7240200
3/4"	I7240250	S7240250
1"	I7240320	S7240320
1 1/4"	I7240400	S7240400
1 1/2"	I7240500	S7240500
2"	I7240630	S7240630
2 1/2"	I7240750	S7240750
3"	I7240900	S7240900
4"	I7241100	S7241100



METRIC DOUBLE UNION BALL VALVE PLAIN

Size	CODE	
	PVC-U	
20	M7240200	
25	M7240250	
32	M7240320	
40	M7240400	
50	M7240500	
63	M7240630	
75	M7240750	
90	M7240900	
110	M7241100	



Valves

IMPERIAL DOUBLE UNION BALL VALVE THREADED

Size	CODE	
	PVC-U	
1/2"	T7240200	
3/4"	T7240250	
1"	T7240320	
1 1/4"	T7240400	
1 1/2"	T7240500	
2"	T7240630	
2 1/2"	T7240750	
3"	T7240900	
4"	T7241100	



BUTTERFLY VALVE

Size	CODE	
	PVC-U	
50/1 1/2"	M8000500	
63/2"	M8000630	
75/2 1/2"	M8000750	
90/3"	M8000900	
110/4"	M8001100	
140/5"	M8001400	
160/6"	M8001600	



Valves

3-WAY BALL VALVES T-PORT INCH PLAIN

Size	CODE PVC-U
1/2"	I9300200
3/4"	I9300250
1"	I9300320
1 1/4"	I9300400
1 1/2"	I9300500
2"	I9300630



3-WAY BALL VALVES T-PORT METRIC

Size	CODE PVC-U
20	M9300200
25	M9300250
32	M9300320
40	M9300400
50	M9300500
63	M9300630



3-WAY BALL VALVES T-PORT BSP THREADED

Size	CODE PVC-U
1/2"	T9310200
3/4"	T9310250
1"	T9310320
1 1/4"	T9310400
1 1/2"	T9310500
2"	T9310630



Valves

IMPERIAL DOUBLE UNION BALL VALVE PLAIN

Size	CODE PVC-U
1/2"	I3220200
3/4"	I3220250
1"	I3220320
1 1/4"	I3220400
1 1/2"	I3220500
2"	I3220630
2 1/2"	I3220750
3"	I3220900
4"	I3221100



METRIC DOUBLE UNION BALL VALVE PLAIN

Size	CODE PVC-U
20	M3220200
25	M3220250
32	M3220320
40	M3220400
50	M3220500
63	M3220630
75	M3220750
90	M3220900
110	M3221100



THREADED DOUBLE UNION BALL VALVE

Size	CODE PVC-U
1/2"	T3210200
3/4"	T3210250
1"	T3210320
1 1/4"	T3210400
1 1/2"	T3210500
2"	T3210630
2 1/2"	T3210750
3"	T3210900
4"	T321100



Valves

METRIC DOUBLE UNION NON RETURN VALVE PLAIN

Size	CODE PVC-U
20	M21N0200
25	M21N0250
32	M21N0320
40	M21N0400
50	M21N0500
63	M21N0630



IMPERIAL DOUBLE UNION BALL NON RETURN VALVE PLAIN

Size	CODE PVC-U
3/8"	I21N0160
1/2"	I21N0200
3/4"	I21N0250
1"	I21N0320
1 1/4"	I21N0400
1 1/2"	I21N0500
2"	I21N0630



Valves

PVC BALL VALVE WITH PE SPIGOT ENDS

Size	CODE PVC-U	
20	M3260200	MTO
25	M3260250	MTO
32	M3260320	MTO
40	M3260400	MTO
50	M3260500	MTO
63	M3260630	MTO



THREADED DOUBLE UNION BALL NON RETURN VALVE

Size	CODE PVC-U
3/8"	T22N0160
1/2"	T22N0200
3/4"	T22N0250
1"	T22N0320
1 1/4"	T22N0400
1 1/2"	T22N0500
2"	T22N0630



Valves

FOOT VALVE FILTER

Size	CODE PVC-U
3/4"	TFLT0250
1"	TFLT0320
1 1/4"	TFLT0400
1 1/2"	TFLT0500
2"	TFLT0630



WAFER CHECK VALVE

Size	CODE PVC-U
50/1 1/2"	MCLP0500
63/2"	MCLP0630
75/2 1/2"	MCLP0750
90/3"	MCLP0900
110/4"	MCLP1100
140/5"	MCLP1400
160/6"	MCLP1600



IMPERIAL SOLVENT DOUBLE UNION AIR RELEASE VALVE PLAIN

Size	CODE PVC-U
3/8"	I21A0160
1/2"	I21A0200
3/4"	I21A0250
1"	I21A0320
1 1/4"	I21A0400
1 1/2"	I21A0500
2"	I21A0630



Valves

METRIC SOLVENT DOUBLE UNION AIR RELEASE VALVE PLAIN

Size	CODE PVC-U
20	M21A0200
25	M21A0250
32	M21A0320
40	M21A0400
50	M21A0500
63	M21A0630



THREADED DOUBLE UNION AIR RELEASE VALVE PLAIN

Size	CODE PVC-U
3/8"	T22A0160
1/2"	T22A0200
3/4"	T22A0250
1"	T22A0320
1 1/4"	T22A0400
1 1/2"	T22A0500
2"	T22A0630



IMPERIAL DOUBLE UNION SPRING CHECK VALVES PLAIN

Size	CODE PVC-U
1/2"	I2300200
3/4"	I2300250
1"	I2300320
1 1/4"	I2300400
1 1/2"	I2300500
2"	I2300630





Aliaxis UK
Dickley Lane
Lenham
Kent
ME17 2DE
United Kingdom
T: +44 (0) 1622 852585

orders@alixaxis.co.uk

astore.co.uk